



## CATALOG & PRICE LIST

---

### **TABLE BASES & ACCESSORIES**

Effective January 15, 2025

## PRICING & FREIGHT NOTIFICATIONS

---

### Pricing Disclaimer

Although the information in this Price List is presented in good faith and believed to be correct at the time of publication, Special-T has no liability for any errors or omissions. Also, please note that all prices are subject to change.

Special-T shall have the right to refuse or cancel any order placed for a product listed at the incorrect price. If an item's correct price is lower than our stated price, we will charge the lower amount and ship the item.

If an item's correct price is higher than our stated price, we will notify the price error for review and extend an opportunity to purchase the item at the correct price.

### Freight Notifications

#### Freight Fee Table Bases

Prepaid & add, FOB Origin, Alpharetta, GA; dock to dock delivery

#### Electric Height Adjustable Bases Only: Patriot, Liberty, and Hike

QTY: 1 - 3 \$55 each | 4-15 \$33 each | 16 - 50 \$27 each | 51 + \$16 each

FOB: Alpharetta, GA; PPD & ADD | Dock-to-Dock delivery.

#### Shipments Outside Continental U.S.

Qualified Freight Prepaid orders with final destination outside Continental U.S. will ship to the Freight Forwarder or Port of Embarkation within the 48 contiguous states. Shipments from Freight Forwarder/Port of Embarkation will ship FOB: Origin to final destination.

#### Oversize Fee

All LTL shipments for pallets 8' and over

96"-108" - additional \$250.00

109"-168" - additional \$350.00

Per custom pallet



## TABLE BASES & ACCESSORIES

---

### CATALOG

For over twenty years, Special-T has led the industry in manufacturing the widest selection of tables and accessories. Our customers—ranging from office furniture dealers to table manufacturers and re-manufacturers—trust us for high-demand, competitively priced products that consistently exceed quality expectations. We pride ourselves on timely, damage-free deliveries and attribute our success to exceptional customer service, superior craftsmanship, and a user-friendly online configurator at [www.SpecialT.net](http://www.SpecialT.net).

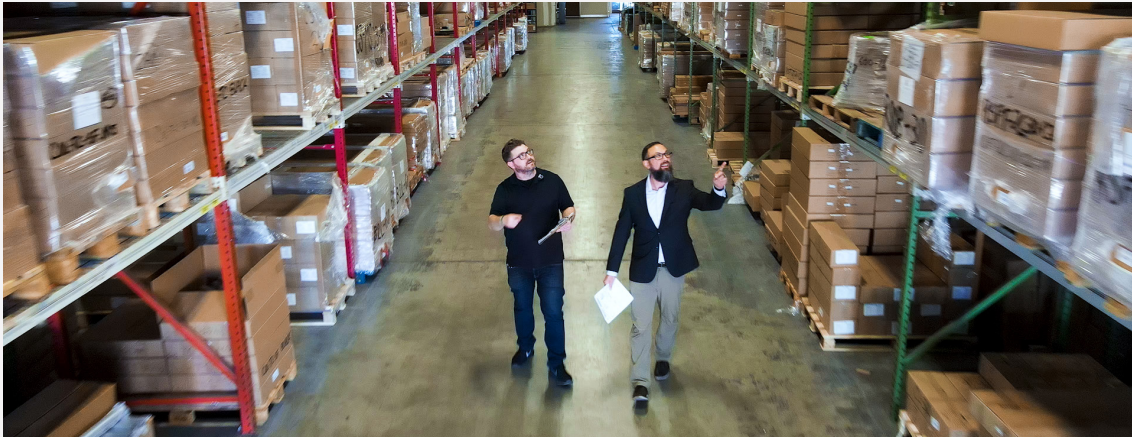
### PURPOSE STATEMENT

Our goal is to develop long-term, mutually beneficial relationships using the highest level of values, ethics, and unique products.

Let us help you by:

- Putting profit back into your projects
- Solving problems with creative solutions
- Utilizing 'A' Grade tables and bases

## PRODUCT IN STOCK READY TO SHIP | ENDLESS OPTIONS



## SAME DAY SHIPPING

24-hour turn-around time | Over 300,000 bases in stock  
You're never late on quick turn-around projects



### SPECIAL-T'S CUSTOMER SERVICE TEAM IS WAITING FOR YOUR CALL

- Personal attention
- Honesty, integrity
- We follow through
- We do what we promise



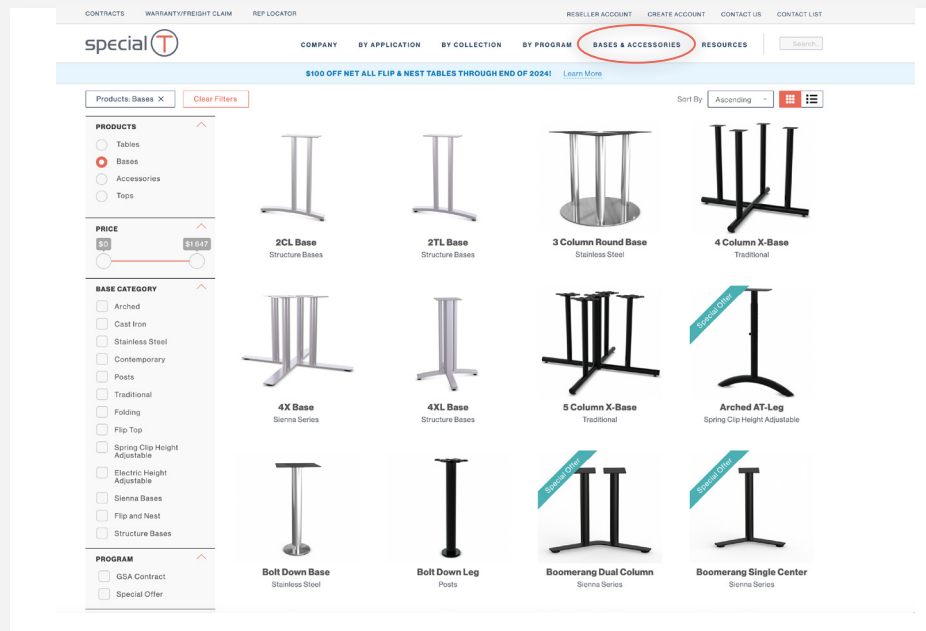
### MORE CHOICES AND CUSTOMIZATION OPTIONS

- Highest quality powder-coating finishes
- 20 standard industry colors
- Stainless Steel & Cast Iron (on some models)
- Custom heights

## CONFIGURE & PRICE ONLINE

Specify quotes and purchase in a matter of just minutes. Special-T's proprietary configurator software is one of the first to be introduced into the office furniture industry. An easy-to-use interface walks the user through the various stages of the table specifying process, allowing them to customize any of Special-T's products in a simple, quick, and error-free manner.

- Visit SpecialT.net
- Go to the "Bases and Accessories" tab
- Apply filters to select the desired base and options
- Call (888) 705-0777 with any questions





## TABLE BASES & ACCESSORIES

### CATALOG & PRICE LIST

Effective January 15, 2025

## TABLE OF CONTENTS

### STAINLESS STEEL

Stainless Steel Round Base.....	08
Stainless Steel Square Base.....	09
Stainless Steel Bolt Down Leg.....	10
Stainless Steel Post Leg.....	11

### CAST IRON

Cast Iron X & T Bases .....	12
Cast Iron Round Bases .....	14

### POSTS

Single Column Post Legs .....	16
1.5" Post Legs.....	17
Square Post Legs.....	18
Reveal Leg .....	19
Bolt Down Leg .....	20

### TRADITIONAL

Single Column T-Leg .....	21
Welded Single Column T-Leg .....	24
EZ-Roll T-Leg.....	25
Dual Column T-Leg.....	26
Single Column C-Leg.....	28
Dual Column C-Leg .....	30
Dual Column H-Leg .....	32
Single Column X-Leg .....	34
4 & 5 Column X-Bases .....	37

### SIENNA SERIES

Sienna Round & Square Bases .....	38
Sienna X Bases .....	40
Sienna Café Power .....	42
Sienna Rectangle Base.....	44
Sienna T-Leg & C-Leg .....	45

### STRUCTURE SERIES

Square End Base.....	47
Square H-Leg .....	48
Structure T-Leg & C-Leg .....	49



## TABLE BASES & ACCESSORIES

### CATALOG & PRICE LIST

Effective January 15, 2025

Structure Post Leg.....	50
Structure 4X-Base.....	51
Structure Cube .....	53

#### ADJUSTABLE HEIGHT

Spring Clip Height Adjustable Bases.....	54
Patriot Electric Height Adjustable Base .....	56
Liberty Electric Height Adjustable base.....	58
Hike Electric Height Adjustable base .....	58

#### FOLDING

Folding T-Leg & C-Leg .....	59
-----------------------------	----

#### FLIP & NEST

Kingston Flip Base.....	60
Transform-2 Base .....	62

#### ACCESSORIES

Casters & Glides.....	63
Perforated Steel Modesty Panels.....	64
Frosted Acrylic Modesty Panels & Privacy Screens .....	65
Laminate Modesty Panels .....	66
Power & Data .....	67
Horizontal Wire Management.....	69
Vertical Wire Managment.....	70
Table Connector.....	71
Top Support .....	71

#### TOPS

Best Value Tops .....	72
-----------------------	----

#### FINISHES

Metal Finishes .....	73
Patriot Metal Finishes.....	74

#### IMPORTANT INFORMATION

Ordering Information .....	76
Warranty & Return Policy .....	77

## STAINLESS STEEL ROUND BASE

The stainless steel Round Base is composed of 304-grade stainless steel. The high quality, beautiful finish, and style make this base perfect for office, restaurant, and hospitality applications.

### ■ FEATURES

UNIT HEIGHT:	27.75" 40.75" SSP720-RB is available only in 27.75" height
MOUNTING PLATE:	13.75" x 13.75" square pressed steel
COLUMN:	3" diameter; 1.5 mm thick; 304-grade stainless steel
FLOOR PLATE:	17-23/32" x 17-23/32" 22-27/32" x 22-27/32" 28-23/64" x 28-23/64" Cover plate is 1mm thick 304-grade Sunray Brushed Stainless Steel
LEVELING GLIDES:	3/4" diameter plastic for leveling on uneven floors
FINISH:	Brushed Stainless Steel
METHOD OF ASSEMBLY:	Bolted construction
PACKAGING:	SSP450-RB are packed in 3 boxes SSP720-RB are packaged in 5 boxes



SSP450-RB



SSP720-RB

### ■ STAINLESS STEEL ROUND BASE PRICING

PART #	UNIT HEIGHT	FLOOR PLATE DIAMETER	RECOMMENDED TOP SIZE	NET WEIGHT	LIST PRICE
SSP450-RB	27.75"	17-23/32"	≤ 32" Rd.	34 lbs	738
			≤ 28" Sq.		
SSP580-RB	27.75"	22-27/32"	≤ 40" Rd.	49 lbs	1,024
			≤ 36" Sq.		
SSP450-RB-42	40.75"	17-23/32"	≤ 30" Rd.	36 lbs	828
			≤ 24" Sq.		
SSP580-RB-42	40.75"	22-27/32"	≤ 36" Rd.	51 lbs	1,144
			≤ 32" Sq.		
SSP720-RB 3 columns	27.75"	28-23/64"	≤ 60" Rd.	91 lbs	974
			≤ 54" Sq.		



## STAINLESS STEEL SQUARE BASE

Classic design meets a beautiful finish in this stainless steel table base; our Square Base features 304-grade stainless steel. It is perfect for architectural, office, restaurant, and hospitality applications.

## FEATURES

UNIT HEIGHT:	27.75" 40.75"
MOUNTING PLATE:	13.75" x 13.75" square pressed steel
COLUMN:	3" diameter; 1.5 mm thick; 304-grade stainless steel
FLOOR PLATE:	17-23/32" x 17-23/32" 22-27/32" x 22-27/32" Cover plate is 1mm thick 304-grade linear Sunray Brushed Stainless Steel
LEVELING GLIDES:	3/4" diameter plastic for leveling on uneven floors
FINISH:	Brushed Stainless Steel
METHOD OF ASSEMBLY:	Bolted construction
PACKAGING:	Bases are packed in 3 boxes



SSP450-SB

## STAINLESS STEEL SQUARE BASE PRICING

PART #	UNIT HEIGHT	FLOOR PLATE	RECOMMENDED TOP SIZE	NET WEIGHT	LIST PRICE
SSP450-SB	27.75"	17-23/32"	≤ 32" Rd.	39 lbs	776
			≤ 28" Sq.		
SSP580-SB	27.75"	22-27/32"	≤ 40" Rd.	59 lbs	1,059
			≤ 36" Sq.		
SSP450-SB-42	40.75"	17-23/32"	≤ 30" Rd.	41 lbs	866
			≤ 24" Sq.		
SSP580-SB-42	40.75"	22-27/32"	≤ 36" Rd.	61 lbs	1,149
			≤ 32" Sq.		

STAINLESS STEEL BOLT DOWN LEG

This stylish yet heavy-duty base provides form and function in bolt-down applications. It is perfect for office or hospitality settings. The base bolts to the floor with an 8" diameter floor plate and has a 3" column diameter.

FEATURES

- UNIT HEIGHT: 27.75" 40.75"
- MOUNTING PLATE: 13.75" x 13.75" square pressed steel
- COLUMN: 3" diameter; 1.5 mm thick; 304- grade stainless steel
- FLOOR PLATE: 8" diameter; cover plate is 1mm thick 304-grade Sunray Brushed Stainless Steel
- FINISH: Brushed Stainless Steel
- METHOD OF ASSEMBLY: Bolted construction
- PACKAGING: Bases are packed in 3 boxes



SSBD

STAINLESS STEEL BOLT DOWN LEG PRICING

PART #	UNIT HEIGHT	COLUMN DIAMETER	RECOMMENDED TOP SIZE	NET WEIGHT	LIST PRICE
SSBD	27.75"	3"	≤ 24" Rd.	16 lbs	365
			≤ 24" Sq.		
SSBD-42	40.75"	3"	≤ 24" Rd.	22 lbs	455
			≤ 24" Sq.		

STAINLESS STEEL POST LEG

Our Stainless Steel Post Leg is crafted from high-quality stainless steel.

FEATURES

- UNIT HEIGHT: 27.75"  
34.75"  
40.75"
- MOUNTING PLATE: 5" x 5", 2.5 mm die-stamped steel
- COLUMN: 3" diameter; 1.5 mm thick; 304-grade stainless steel
- LEVELING GLIDES: 3.25" x .75" black plastic with 1/2" of adjustment
- FINISH: Brushed Stainless Steel
- METHOD OF ASSEMBLY: Bolted construction
- PACKAGING: Bases are packaged 2 per box, priced individually



SS29-PL

STAINLESS STEEL POST LEG PRICING

PART #	UNIT HEIGHT	COLUMN DIAMETER	NET WEIGHT	LIST PRICE
SS29-PL	27.75"	3"	6 lbs	214
SS36-PL	34.75"	3"	7 lbs	258
SS42-PL	40.75"	3"	8 lbs	305

## CAST IRON X &amp; T BASES

The Cast Iron 2.0 X and T Bases are fabricated from an 11 gauge tubular steel column and a heavy-duty cast iron floor base. Die-formed steel threaded rod and nut are used for assembly.



CI-2222X



CI-24T

CI-2222X-42-FR  
With Foot Ring

## ■ FEATURES

UNIT HEIGHT:	27.75" 40.75"
WELDED	
MOUNTING PLATE:	9.5" x 9.5" x 5/32" die-stamped steel
COLUMN:	3" diameter
LEVELING GLIDES:	1-1/8" diameter plastic for leveling on uneven floors
FINISH:	Black Wrinkle and Fog Gray
METHOD OF ASSEMBLY:	Bolted construction
PACKAGING:	Foot and column are packaged in 2 boxes

## ■ OPTIONS

SELF LEVELING GLIDES:	Specify -SLG
FOOT RING:	Specify -FR 16" diameter, 12" high foot ring for 40.75" high bases

■ CAST IRON 2.0 X & T BASES PRICING

TYPE	PART #	UNIT HEIGHT	BASE SPREAD	RECOMMENDED TOP SIZE	NET WEIGHT	LIST PRICE
X-BASES	CI-2222X	27.75"	22/22"	≤ 30" Rd.	18 lbs	151
				≤ 24" Sq.		
	CI-2230X	27.75"	22/30"	≤ 36" Sq.	20 lbs	170
				≤ 36" Rd.		
	CI-3030X	27.75"	30/30"	≤ 42" Sq.	22 lbs	189
				≤ 42" Rd.		
X-BASES BAR HEIGHT	CI-2222X-42	40.75"	22/22"	≤ 24" Sq.	21 lbs	254
				≤ 24" Rd.		
	CI-2230X-42	40.75"	22/30"	≤ 36" Sq.	23 lbs	273
				≤ 36" Rd.		
	CI-3030X-42	40.75"	30/30"	≤ 36" Sq.	25 lbs	292
				≤ 36" Rd.		
T-BASES	CI-24T	27.75"	22"	24" - 30" x 36" - 72"	15 lbs	115
	CI-24T-42	40.75"	22"	24" - 30" x 36" - 72"	18 lbs	218
SELF- LEVELING GLIDES	-SLG	For X Base			-	+ 92
	-SLG	For T Base			-	+ 46
FOOT- RING	-FR	12"			6 lbs	+ 110

## CAST IRON 2.0 ROUND BASES

The Cast Iron 2.0 Round Base features a column made from 11 gauge tubular steel and a heavy-duty cast iron floor plate. Die-formed steel threaded rod and nut are used for



CI-18R

CI-18R-42-FR3  
With Foot Ring

#### ■ FEATURES

UNIT HEIGHT:	27.75" 40.75"
WELDED	
MOUNTING PLATE:	9.5" x 9.5" x 5/32" die-stamped steel
LEVELING GLIDES:	1-1/8" diameter plastic for leveling on uneven floors
FINISH:	Black Wrinkle and Fog Gray
METHOD OF ASSEMBLY:	Bolted construction
PACKAGING:	Floor plate and column are packaged separately

#### ■ OPTIONS

SELF LEVELING GLIDES:	Specify -SLG.
FOOT RING:	12" high, for 40.75" high bases Specify -FR-3 16" diameter for 3" column. Specify -FR-4 9.5" diameter for 4" column.

■ CAST IRON 2.0 ROUND BASES PRICING

TYPE	PART #	UNIT HEIGHT	FLOOR PLATE	COLUMN DIAMETER	RECOMMENDED TOP SIZE	NET WEIGHT	LIST PRICE
ROUND BASES	CI-18R	27.75"	18"	3"	≤ 30" Rd.	22 lbs	189
					≤ 24" Sq.		
	CI-24R	27.75"	24"	3"	≤ 42" Rd.	40 lbs	303
					≤ 36" Sq.		
	CI-30R	27.75"	30"	4"	≤ 54" Rd.	57 lbs	426
					≤ 48" Sq.		
ROUND BASES BAR HEIGHT	CI-18R-42	40.75"	18"	3"	≤ 26" Rd.	26 lbs	292
					≤ 22" Sq.		
	CI-24R-42	40.75"	24"	3"	≤ 36" Rd.	44 lbs	406
					≤ 32" Sq.		
	CI-30R-42	40.75"	30"	4"	≤ 48" Rd.	62 lbs	529
					≤ 42" Sq.		
SELF LEVELING GLIDES	-SLG	Self-leveling glides - 18" Base				-	+ 92
	-SLG	Self-leveling glides - 24" and 30" Bases				-	+ 115
FOOTRING	-FR-3 for 3" dia column	12"	-	16"	-	6 lbs	+ 110
	-FR-4 for 4" dia column	12"	-	19.5"	-	6 lbs	+ 110

## SINGLE COLUMN POST LEGS

Single Column Post Legs are fabricated with 14 gauge steel. Threaded inserts for levelers or casters are welded for maximum strength.

### FEATURES

UNIT HEIGHT:	27.75" 40.75"
WELDED MOUNTING PLATE:	4" x 4" x 7/32" or 6" x 6" x 7/32" welded
LEVELING GLIDES:	1-3/8" diameter plastic with steel threaded inserts; PL-27-4 has a 4" metal glide
CASTERS:	PL-27-2-C and PL-27-C have a 2" dual-wheel locking caster, 112 lbs capacity
FINISH:	Stock color is Black, PL-27-2 is also stocked in Metallic Silver.
PACKAGING:	Bases are packaged 2 per box PL-27-2 and PL-27-2-C are packaged 4 per box PL-27-342 and PL-27-442 are packaged one per box Priced individually

### OPTIONS

CUSTOM HEIGHT:	Specify -CUSTHT1 for height between 5" - 27.75" Specify -CUSTHT2 for height between 27.75" - 40.75"
----------------	--

### SINGLE COLUMN POST LEGS PRICING

PART #	UNIT HEIGHT	COLUMN DIAMETER	MOUNTING PLATE SIZE	NET WEIGHT	LIST PRICE (EACH)
<b>PL-27-2</b>	27.75"	2"	4" x 4"	4 lbs	80
<b>PL-27-2-MS</b> Metallic Silver	27.75"	2"	4" x 4"	4 lbs	80
<b>PL-27-2-C</b> with casters	27.75"	2"	4" x 4"	4 lbs	100
<b>PL-27-2FM</b> folding leg	27.75"	2"	5" x 8"	7 lbs	246
<b>PL-27-3</b>	27.75"	3"	6" x 6"	6 lbs	118
<b>PL-27-342</b>	40.75"	3"	6" x 6"	10 lbs	185
<b>PL-27-4</b>	27.75"	4"	6" x 6"	8 lbs	160
<b>PL-27-442</b>	40.75"	4"	6" x 6"	12 lbs	227
<b>-CUSTHT1</b>	For height between 5" - 27.75"				+ 72
<b>-CUSTHT2</b>	For height between 27.75" - 40.75"				+ 139



PL-27-2FM



PL-27-4



1.5" POST LEGS

1.5" diameter tubular columns are fabricated with 14 gauge steel.



FEATURES

- UNIT HEIGHT: 27.75"
- WELDED
- MOUNTING PLATE: 4" x 4" x 7/32"
- BELL GLIDE: 2-3/8" diameter nylon glide in 2.5" high steel extender
- CASTERS: 3" locking skate wheel caster with black core; 112 lbs capacity
- ADJUSTABLE HEIGHT: Adjustable range from 24.75" to 34.75"  
Adjusts in 1" increments
- FINISH: Stock color is Black
- PACKAGING: Bases are packaged 4 per box, priced individually

1.5" POST LEGS PRICING

PART #	UNIT HEIGHT	COLUMN DIAMETER	MOUNTING PLATE SIZE	NET WEIGHT	LIST PRICE (EA)
<b>SPYL</b> with bell glide	27.75"	1.5"	4" x 4"	4 lbs	116
<b>SPYL-SC</b> with caster	27.75"	1.5"	4" x 4"	4 lbs	116
<b>SPYL-AH</b> spring clip adjustable height	27.75"	1.5"	4" x 4"	5 lbs	150

## SQUARE POST LEG

Square post legs are fabricated with 14 gauge square steel threaded inserts for levelers.  
Post mounts flush with the table corner.

### FEATURES

UNIT HEIGHT:	27.75" 40.75"
WELDED	
MOUNTING PLATE:	5" x 5" x 7/32"
LEVELING GLIDES:	2-3/8" diameter plastic with steel threaded inserts
CASTERS:	SQ-RH-C comes with a 2.5" dual-wheel locking caster, 112 lbs capacity
FINISH:	SQ-RH is stocked in Black and Metallic Silver
PACKAGING:	Bases are packaged 4 per box, priced individually



SQ-RH

### OPTIONS

CUSTOM HEIGHT:	Specify -CUSTHT1 for height between 5" - 27.75" Specify -CUSTHT2 for height between 27.75" - 40.75"
----------------	--

### SQUARE POST LEG PRICING

PART #	UNIT HEIGHT	COLUMN DIAMETER	NET WEIGHT	LIST PRICE (EACH)
<b>SQ-RH</b>	27.75"	2-3/8"	6 lbs	128
<b>SQ-RH-MS</b> Metallic Silver	27.75"	2-3/8"	6 lbs	128
<b>SQ-RH-C</b> with Caster	27.75"	2-3/8"	6 lbs	148
<b>SQ-RH-42</b> Bar Height	40.75"	2-3/8"	9 lbs	195
<b>-CUSTHT1</b>	For height between 5" - 27.75"			+ 72
<b>-CUSTHT2</b>	For height between 27.75" - 40.75"			+ 139

REVEAL LEG

The Reveal legs are fabricated with 14 gauge 2" diameter tubular steel, 45 ° angle support is welded to a 6" x 6" mounting plate for maximum strength.

FEATURES

- UNIT HEIGHT:27.75"
- WELDED
- MOUNTING PLATE:6" x 6" x 7/32" steel
- LEVELING GLIDES:1-3/8" diameter plastic with steel threaded inserts
- FINISH:Stock color is Black
- PACKAGING:Bases are packaged 2 per box, priced individually

OPTIONS

- CUSTOM HEIGHT:Specify -CUSTHT1 for height between 5" - 27.75"



RL

REVEAL LEG PRICING

PART #	UNIT HEIGHT	COLUMN DIAMETER	MOUNTING PLATE SIZE	NET WEIGHT	LIST PRICE (EACH)
RL	27.75"	2"	6" x 6"	6 lbs	179
-CUSTHT1	For height between 5" - 27.75"				+ 72

## BOLT DOWN LEG

This stylish yet heavy-duty base provides form and function in bolt-down applications. It is perfect for educational or hospitality settings—the base bolts to the floor with a 6" diameter plate and 3" column diameter.

### FEATURES

UNIT HEIGHT:	27.75" 34.75" 40.75"
WELDED MOUNTING PLATE:	10" x 10"
COLUMN:	3" diameter
FLOOR PLATE:	6" diameter cover
FINISH:	Stock color is Black
METHOD OF ASSEMBLY:	Bolted construction
PACKAGING:	Bases are packaged in 2 boxes



### OPTIONS

CUSTOM HEIGHT:	Specify -CUSTHT1 for height between 5" - 27.75" Specify -CUSTHT2 for height between 27.75" - 40.75"
----------------	--

### BOLT DOWN LEG PRICING

PART #	UNIT HEIGHT	COLUMN DIAMETER	NET WEIGHT	LIST PRICE (EACH)
<b>BD-29</b>	27.75"	3"	13 lbs	179
<b>BD-36</b> Counter Height	34.75"	3"	14 lbs	246
<b>BD-42</b> Bar Height	40.75"	3"	15 lbs	246
<b>-CUSTHT1</b>	5" - 27.75"	3"	up to 13 lbs	+ 72
<b>-CUSTHT2</b>	27.75" - 40.75"	3"	up to 15 lbs	+ 139

## SINGLE COLUMN T-LEG

Fabricated 14 gauge steel with steel end caps and threaded inserts for levelers or casters featuring a bolted construction.



TL-24



TL-22-C

### ■ FEATURES

UNIT HEIGHT:	27.75" 34.75" 40.75"
WELDED	
MOUNTING PLATE:	5" x 8" x 7/32" steel
LEVELING GLIDES:	1-3/8" diameter plastic with steel threaded inserts
FINISH:	Stock color is Black
PACKAGING:	Bases are packaged 2 per box, priced individually

### ■ OPTIONS

CUSTOM HEIGHT:	Specify -CUSTHT1 for height between 5" - 27.75" Specify -CUSTHT2 for height between 27.75" - 40.75"
BAR HEIGHT:	Specify -42
COUNTER HEIGHT:	Specify -36
ADJUSTABLE HEIGHT:	Specify -AH
CASTERS:	Specify -C. 2" dual-wheel locking caster, 112 lbs capacity
SELF-LEVELING GLIDES:	Specify -SLG
FOLDING:	Specify -GFM

■ SINGLE COLUMN T-LEG PRICING

	PART #	UNIT HEIGHT	COLUMN DIAMETER	BASE SPREAD	MOUNTING PLATE SIZE	RECOMMENDED TOP DEPTH	NET WEIGHT	LIST PRICE (EACH)
STANDARD	TL-18	27.75"	2"	16"	5" x 8"	24" - 28"	7.50 lbs	188
	TL-20	27.75"	2"	18"	5" x 8"	26" - 32"	7.75 lbs	188
	TL-22	27.75"	2"	20"	5" x 8"	28" - 24"	8.00 lbs	192
	TL-24	27.75"	2"	22"	5" x 8"	30" - 36"	8.50 lbs	192
	TL-30	27.75"	2"	26"	5" x 8"	42" - 46"	9.00 lbs	196
CASTERS	TL-18-C	27.75"	2"	16"	5" x 8"	24" - 28"	7.50 lbs	228
	TL-20-C	27.75"	2"	18"	5" x 8"	26" - 32"	7.75 lbs	228
	TL-22-C	27.75"	2"	20"	5" x 8"	28" - 24"	8.00 lbs	232
	TL-24-C	27.75"	2"	22"	5" x 8"	30" - 36"	8.50 lbs	232
	TL-30-C	27.75"	2"	26"	5" x 8"	42" - 46"	9.00 lbs	236
COUNTER HEIGHT	TL-18-36	34.75"	2"	16"	5" x 8"	24" - 28"	8.50 lbs	255
	TL-20-36	34.75"	2"	18"	5" x 8"	26" - 32"	7.75 lbs	255
	TL-22-36	34.75"	2"	20"	5" x 8"	28" - 24"	8.50 lbs	259
	TL-24-36	34.75"	2"	22"	5" x 8"	30" - 36"	9.00 lbs	259
	TL-30-36	34.75"	2"	26"	5" x 8"	42" - 46"	10.00 lbs	263
BAR HEIGHT	TL-18-42	40.75"	2"	16"	5" x 8"	24" - 28"	9.50 lbs	255
	TL-20-42	40.75"	2"	18"	5" x 8"	26" - 32"	9.75 lbs	255
	TL-22-42	40.75"	2"	20"	5" x 8"	28" - 24"	10.00 lbs	259
	TL-24-42	40.75"	2"	22"	5" x 8"	30" - 36"	10.50 lbs	259
	TL-30-42	40.75"	2"	26"	5" x 8"	42" - 46"	11.00 lbs	263

■ SINGLE COLUMN T-LEG PRICING

	PART #	UNIT HEIGHT	COLUMN DIAMETER	BASE SPREAD	MOUNTING PLATE SIZE	RECOMMENDED TOP DEPTH	NET WEIGHT	LIST PRICE (EACH)
ADJUSTABLE HEIGHT	TL-18-AH	24.75 - 34.75"	2"	16"	5" x 8"	24" - 28"	10.50 lbs	303
	TL-20-AH	24.75 - 34.75"	2"	18"	5" x 8"	26" - 32"	10.75 lbs	303
	TL-22-AH	24.75 - 34.75"	2"	20"	5" x 8"	28" - 24"	11.00 lbs	307
	TL-24-AH	24.75 - 34.75"	2"	22"	5" x 8"	30" - 36"	11.50 lbs	307
	TL-30-AH	24.75 - 34.75"	2"	26"	5" x 8"	42" - 46"	12.00 lbs	311
AH 34.75 - 44.75	TL-18-42AH	34.75 - 44.75"	2"	16"	5" x 8"	24" - 28"	9.50 lbs	408
	TL-24-42AH	34.75 - 44.75"	2"	18"	5" x 8"	30" - 36"	10.50 lbs	412
	TL-30-42AH	34.75 - 44.75"	2"	20"	5" x 8"	42" - 46"	11.00 lbs	416
FOLDING	TL-18-GFM	27.75"	2"	16"	5" x 8"	24" - 28"	10.50 lbs	449
	TL-20-GFM	27.75"	2"	18"	5" x 8"	26" - 32"	10.75 lbs	449
	TL-22-GFM	27.75"	2"	20"	5" x 8"	28" - 24"	11.00 lbs	453
	TL-24-GFM	27.75"	2"	22"	5" x 8"	30" - 36"	11.50 lbs	453
	TL-30-GFM	27.75"	2"	26"	5" x 8"	42" - 46"	12.00 lbs	457
OPTIONS	-CUSTHT1	For height between 5" - 27.75"						+ 72
	-CUSTHT2	For height between 27.75" - 40.75"						+ 139
	-C	Casters						+ 40
	-SLG	Self-leveling Glides						+ 46

## WELDED SINGLE COLUMN T-LEG

Fabricated 14 gauge steel with steel endcaps and threaded inserts for levelers or casters. Featuring welded construction.

#### FEATURES

UNIT HEIGHT:	27.75"
WELDED MOUNTING PLATE:	5" x 8" x 7/32" steel
LEVELING GLIDES:	1-3/8" diameter plastic with steel threaded inserts
FINISH:	Stock color is Black
PACKAGING:	Bases are packaged 2 per box, priced individually

#### OPTIONS

Self-leveling Glides:	Specify -SLG-8
-----------------------	----------------



TL-24W

#### WELDED SINGLE COLUMN T-LEG PRICING

PART #	UNIT HEIGHT	COLUMN DIAMETER	BASE SPREAD	RECOMMENDED TOP DEPTH	NET WEIGHT	LIST PRICE (EACH)
TL-18W	27.75"	2"	16"	18"- 20"	7 lbs	188
TL-24W	27.75"	2"	22"	24"- 28"	8 lbs	192
TL-30W	27.75"	2"	26"	28"- 30"	9.5 lbs	196
TL-36W	27.75"	2"	30"	34"- 36"	10 lbs	269
-SLG	Self-leveling Glides					+ 46



## EZ-ROLL T-LEG

T-Leg with concealed EZ-Roll wheels is stationary or can be mobile when tilted. Fabricated 14 gauge 2" diameter columns with steel endcaps and hid EZ-Roll wheels.

### FEATURES

UNIT HEIGHT:	27.75"
WELDED MOUNTING PLATE:	5" x 8" x 7/32"
EZ-ROLL WHEELS:	1.5" diameter built-in wheels
FINISH:	Stock color is Black
PACKAGING:	Bases are packed 2 per box, priced individually



### OPTIONS

CUSTOM HEIGHT:	Specify -CUSTHT1 for height between 5" - 27.75"
----------------	---



### EZ-ROLL T-LEG PRICING

PART #	COLUMN DIAMETER	BASE SPREAD	RECOMMENDED TOP DEPTH	NET WEIGHT	LIST PRICE (EACH)
TL-18-EZR	2"	16"	18" - 22"	7 lbs	235
TL-24-EZR	2"	22"	24" - 26"	8 lbs	238
TL-30-EZR	2"	26"	28" - 30"	9 lbs	240
-CUSTHT1	For height between 5" - 27.75"				+ 72

## DUAL COLUMN T-LEGS

Fabricated 14 gauge steel with steel endcaps and threaded inserts for levelers or casters.



2TL-30



2TL-30-C

#### ■ FEATURES

---

UNIT HEIGHT:	27.75" 40.75"
MOUNTING PLATE:	7/32" steel
LEVELING GLIDES:	1-3/8" diameter plastic with steel threaded inserts
FINISH:	Stock color is Black
PACKAGING:	2TL-24, 2TL-30, 2TL-36, 2TL-42, and 2TL-48 bases are packed 2 per box, priced individually 2TL-60 bases are packed 1 per box, priced individually

#### ■ OPTIONS

---

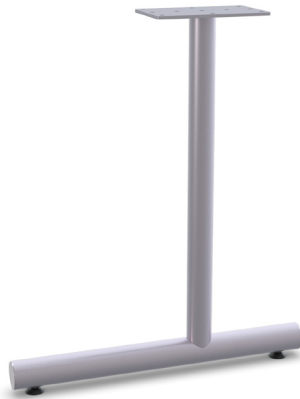
CUSTOM HEIGHT:	Specify -CUSTHT1 for height between 5" - 27.75" Specify -CUSTHT2 for height between 27.75" - 40.75"
BAR HEIGHT:	Specify -42
ADJUSTABLE HEIGHT:	Specify -AH
CASTERS:	Specify -C. 2" dual-wheel locking caster
SELF LEVELING GLIDES:	Specify -SLG

■ DUAL COLUMN T-LEGS PRICING

	PART #	UNIT HEIGHT	COLUMN DIAMETER	BASE SPREAD	MOUNTING PLATE SIZE	RECOMMENDED TOP DEPTH	NET WEIGHT	LIST PRICE (EACH)
STANDARD	2TL-24	27.75"	2"	22"	5" x 11" welded	24" - 28"	13 lbs	258
	2TL-30	27.75"	2"	26"	5" x 11" welded	30" - 36"	14 lbs	261
	2TL-42	27.75"	2"	36"	6" x 16"	42" - 46"	17 lbs	283
	2TL-48	27.75"	2"	42"	6" x 16"	48" - 52"	17 lbs	296
	2TL-60	27.75"	2-3/8"	42"	(2) 6" x 6"	52" - 60"	18 lbs	384
CASTERS	2TL-24-C	27.75"	2"	22"	5" x 11" welded	24" - 28"	13 lbs	298
	2TL-30-C	27.75"	2"	26"	5" x 11" welded	30" - 36"	14 lbs	301
	2TL-42-C	27.75"	2"	36"	6" x 16"	42" - 46"	17 lbs	323
	2TL-48-C	27.75"	2"	42"	6" x 16"	48" - 52"	17 lbs	336
BAR HEIGHT	2TL-24-42	40.75"	2"	22"	5" x 11" welded	24" - 28"	18 lbs	391
	2TL-30-42	40.75"	2"	26"	5" x 11" welded	30" - 36"	19 lbs	394
	2TL-42-42	40.75"	2"	36"	6" x 16"	42" - 46"	22 lbs	416
	2TL-48-42	40.75"	2"	42"	6" x 16"	48" - 52"	22 lbs	429
ADJUSTABLE HEIGHT	2TL-24-AH	24.75" - 34.75"	2"	22"	(2) 5" x 8"	24" - 28"	19 lbs	487
	2TL-30-AH	24.75" - 34.75"	2"	26"	(2) 5" x 8"	30" - 36"	20 lbs	490
	2TL-42-AH	24.75" - 34.75"	2"	36"	(2) 5" x 8"	42" - 46"	23 lbs	512
	2TL-48-AH	24.75" - 34.75"	2"	42"	(2) 5" x 8"	48" - 52"	23 lbs	525
CUSTOM HEIGHT	-CUSTHT1	For height between 5" - 27.75"						+ 46
	-CUSTHT2	For height between 27.75" - 40.75"						+ 72
SLG	-SLG	Self-leveling Glides						+ 46

## SINGLE COLUMN C-LEGS

Fabricated 14 gauge steel with steel endcaps and threaded inserts for levelers or casters.



CL-24



CL-24-C

#### ■ FEATURES

---

UNIT HEIGHT:	27.75" 34.75 40.75"
MOUNTING PLATE:	5" x 8" 7/32" steel
LEVELING GLIDES:	1-3/8" diameter plastic with steel threaded inserts
FINISH:	Stock color is Black
PACKAGING:	Bases are packed 2 per box, priced individually

#### ■ OPTIONS

---

CUSTOM HEIGHT:	Specify -CUSTHT1 for height between 5" - 27.75" Specify -CUSTHT2 for height between 27.75" - 40.75"
BAR HEIGHT:	Specify -42
COUNTER HEIGHT:	Specify -36
ADJUSTABLE HEIGHT:	Specify -AH
CASTERS:	Specify -C. 2" dual-wheel locking caster, 112 lbs capacity
SELF LEVELING GLIDES:	Specify -SLG
FOLDING:	Specify -GFM

■ SINGLE COLUMN C-LEGS PRICING

	PART #	UNIT HEIGHT	COLUMN DIAMETER	BASE SPREAD	MOUNTING PLATE SIZE	RECOMMENDED TOP DEPTH	NET WEIGHT	LIST PRICE (EACH)
STANDARD	CL-18	27.75"	2"	22"	5" x 8"	24" - 28"	7.5 lbs	188
	CL-24	27.75"	2"	26"	5" x 8"	30" - 36"	8.5 lbs	192
	CL-30	27.75"	2"	36"	5" x 8"	42" - 46"	9.0 lbs	196
CASTERS	CL-18-C	27.75"	2"	22"	5" x 8"	24" - 28"	7.5 lbs	228
	CL-24-C	27.75"	2"	26"	5" x 8"	30" - 36"	8.5 lbs	232
	CL-30-C	27.75"	2"	36"	5" x 8"	42" - 46"	9.0 lbs	236
COUNTER HEIGHT	CL-18-36	34.75"	2"	22"	5" x 8"	24" - 28"	8.5 lbs	255
	CL-24-36	34.75"	2"	26"	5" x 8"	30" - 36"	9.0 lbs	259
	CL-30-36	34.75"	2"	36"	5" x 8"	42" - 46"	10.0 lbs	263
BAR HEIGHT	CL-18-42	40.75"	2"	22"	5" x 8"	24" - 28"	9.5 lbs	255
	CL-24-42	40.75"	2"	26"	5" x 8"	30" - 36"	10.5 lbs	259
	CL-30-42	40.75"	2"	36"	5" x 8"	42" - 46"	11.0 lbs	263
ADJUSTABLE HEIGHT	CL-18-AH	24.75" - 34.75"	2"	22"	5" x 8"	24" - 28"	10.5 lbs	303
	CL-24-AH	24.75" - 34.75"	2"	26"	5" x 8"	30" - 36"	11.5 lbs	307
	CL-30-AH	24.75" - 34.75"	2"	36"	5" x 8"	42" - 46"	12.0 lbs	311
FOLDING	CL-18-GFM	27.75"	2"	22"	5" x 8"	24" - 28"	10.0 lbs	449
	CL-24-GFM	27.75"	2"	26"	5" x 8"	30" - 36"	11.0 lbs	453
	CL-30-GFM	27.75"	2"	36"	5" x 8"	42" - 46"	11.5 lbs	457
CUSTOM HEIGHT	-CUSTHT1	For height between 5" - 27.75"						+ 72
	-CUSTHT2	For height between 27.75" - 40.75"						+ 139
SLG	-SLG	Self-leveling Glides						+ 46

## DUAL COLUMN C-LEGS

Fabricated 14 gauge steel with steel endcaps and threaded inserts for levelers or casters.



2CL-30



2CL-30-C

#### ■ FEATURES

UNIT HEIGHT:	27.75"   34.75   40.75"
MOUNTING PLATE:	5" x 11" 7/32" steel
LEVELING GLIDES:	1-3/8" diameter plastic with steel threaded inserts
FINISH:	Stock color is Black
PACKAGING:	Bases are packed 2 per box, priced individually

#### ■ OPTIONS

CUSTOM HEIGHT:	Specify -CUSTHT1 for height between 5" - 27.75" Specify -CUSTHT2 for height between 27.75" - 40.75"
BAR HEIGHT:	Specify -42
ADJUSTABLE HEIGHT:	Specify -AH
CASTERS:	Specify -C. 2" dual-wheel locking caster, 112 lbs capacity
SELF LEVELING GLIDES:	Specify -SLG.-M8

■ DUAL COLUMN C-LEG PRICING

	PART #	UNIT HEIGHT	COLUMN DIAMETER	BASE SPREAD	MOUNTING PLATE SIZE	RECOMMENDED TOP DEPTH	NET WEIGHT	LIST PRICE (EACH)
STANDARD	<b>2CL-24</b>	27.75"	2"	22"	5" x 11" welded	24" - 28"	13 lbs	258
	<b>2CL-30</b>	27.75"	2"	26"	5" x 11" welded	28" - 30"	14 lbs	261
CASTERS	<b>2CL-24-C</b>	27.75"	2"	22"	(2) 5" x 8"	24" - 28"	13 lbs	298
	<b>2CL-30-C</b>	27.75"	2"	26"	(2) 5" x 8"	28" - 30"	14 lbs	301
BAR HEIGHT	<b>2CL-24-42</b>	40.75"	2"	22"	(2) 5" x 8"	24" - 28"	18 lbs	391
	<b>2CL-30-42</b>	40.75"	2"	26"	(2) 5" x 8"	28" - 30"	19 lbs	394
ADJUSTABLE HEIGHT	<b>2CL-24-AH</b>	24.75" - 34.75"	2"	22"	(2) 5" x 8"	24" - 28"	19 lbs	487
	<b>2CL-30-AH</b>	24.75" - 34.75"	2"	26"	(2) 5" x 8"	28" - 30"	20 lbs	490
CUSTOM HEIGHT	<b>-CUSTHT1</b>	For height between 5" - 27.75"						+ 139
	<b>-CUSTHT2</b>	For height between 27.75" - 40.75"						+ 276
SLG	<b>-SLG</b>	Self-leveling Glides						+ 46

## DUAL COLUMN H-LEGS

Fabricated 14 gauge steel with threaded inserts for levelers or casters.



### ■ FEATURES

UNIT HEIGHT:	27.75" 34.75 40.75"
MOUNTING PLATE:	(2) 6" x 6" x 7/32" steel
LEVELING GLIDES:	1-3/8" diameter plastic with steel threaded inserts
FINISH:	Stock color is Black
PACKAGING:	Bases are packed 2 per box, priced individually

### ■ OPTIONS

CUSTOM HEIGHT:	Specify -CUSTHT1 for height between 5" - 27.75" Specify -CUSTHT2 for height between 27.75" - 40.75"
COUNTER HEIGHT:	Specify -36
BAR HEIGHT:	Specify -42
SELF LEVELING GLIDES:	Specify -SLG



■ DUAL COLUMN H-LEGS PRICING

	PART #	UNIT HEIGHT	COLUMN DIAMETER	BASE SPREAD	RECOMMENDED TOP DEPTH	NET WEIGHT	LIST PRICE (EACH)
STANDARD	HL-24	27.75"	2"	16.5"	24" - 28"	12 lbs	188
	HL-30	27.75"	2"	22.5"	30" - 40"	13 lbs	212
	HL-330	27.75"	3"	23.5"	30" - 40"	18 lbs	246
	HL-342	27.75"	3"	30"	42" - 48"	18 lbs	286
CASTERS	HL-24-C	27.75"	2"	16.5"	24" - 28"	12 lbs	228
	HL-30-C	27.75"	2"	22.5"	30" - 40"	13 lbs	252
COUNTER HEIGHT	HL-2436	34.75"	2"	16.5"	24" - 28"	13 lbs	321
	HL-3036	34.75"	2"	22.5"	30" - 40"	15 lbs	345
BAR HEIGHT	HL-2442	40.75"	2"	16.5"	24" - 28"	15 lbs	321
	HL-3042	40.75"	2"	22.5"	30" - 40"	16 lbs	345
CUSTOM HEIGHT	-CUSTHT1	For height between 5" - 27.75"					+ 139
	-CUSTHT2	For height between 27.75" - 40.75"					+ 276
SLG	-SLG	Self-leveling Glides					+ 46

## SINGLE COLUMN X-BASES

Fabricated 14 gauge steel with steel endcaps and threaded inserts for levelers or casters.  
Bolted construction



**XL-36**



**XL-24QF**  
Quick-Flip Mechanism



**XL-42-36**  
Rectangular X Base

### ■ FEATURES

UNIT HEIGHT:	27.75"
LEVELING GLIDES:	1-3/8" diameter plastic with steel threaded inserts
FINISH:	Stock color is Black
PACKAGING:	Bases are packaged in 2 boxes

### ■ OPTIONS

CUSTOM HEIGHT:	Specify -CUSTHT1 for height between 5" - 27.75" Specify -CUSTHT2 for height between 27.75" - 40.75"
BAR HEIGHT:	Specify -42
CASTERS:	Specify -C. 2" dual-wheel locking caster, 112 lbs capacity
SELF LEVELING GLIDES:	Specify -SLG
FLIP TOP:	Specify -QF Quick-flip mechanism flips top by pulling on the release handle. Top locks automatically when returned to a horizontal position

■ SINGLE COLUMN X-BASES PRICING

	PART #	COLUMN DIAMETER	BASE SPREAD	MOUNTING PLATE SIZE	RECOMMENDED TOP SIZE		NET WEIGHT	LIST PRICE
					ROUND	SQUARE		
FIXED TOP STANDARD HEIGHT	XL-24	3"	20" x 20"	8" x 8"	20" - 24" Rd.	20" - 22" Sq.	15 lbs	286
	XL-30	3"	26" x 26"	8" x 8"	26" - 36" Rd.	26" - 30" Sq.	17 lbs	296
	XL-36	3"	32" x 32"	8" x 8"	32" - 42" Rd.	32" - 36" Sq.	19 lbs	303
	XL-42	3"	36" x 36"	8" x 8"	36" - 48" Rd.	36" - 42" Sq.	21 lbs	311
	XL-48	3"	42" x 42"	8" x 8"	42" - 52" Rd.	42" - 48" Sq.	23 lbs	322
					RECTANGULAR			
	XL-36/24	3"	32" x 20"	8" x 8"	36" x 24"		13 lbs	303
	XL-48/30	3"	42" x 26"	8" x 8"	48" x 30"		15 lbs	322
CUSTOM HEIGHT	-CUSTHT1	For height between 5" - 27.75"						+ 72
	-CUSTHT2	For height between 27.75" - 40.75"						+ 139
SLG	-SLG	Self-leveling Glides						+ 92

■ SINGLE COLUMN X-BASES PRICING

	PART #	COLUMN DIAMETER	BASE SPREAD	MOUNTING PLATE SIZE	RECOMMENDED TOP SIZE		NET WEIGHT	LIST PRICE
					ROUND	SQUARE		
FIXED TOP STANDARD HEIGHT WITH CASTERS	XL-24-C	3"	20" x 20"	8" x 8"	20" - 24" Rd.	20" - 22" Sq.	15 lbs	366
	XL-30-C	3"	26" x 26"	8" x 8"	26" - 36" Rd.	26" - 30" Sq.	17 lbs	376
	XL-36-C	3"	32" x 32"	8" x 8"	32" - 42" Rd.	32" - 36" Sq.	19 lbs	383
	XL-42-C	3"	36" x 36"	8" x 8"	36" - 48" Rd.	36" - 42" Sq.	21 lbs	391
	XL-48-C	3"	42" x 42"	8" x 8"	42" - 52" Rd.	42" - 48" Sq.	23 lbs	402
					RECTANGULAR			
	XL-36/24-C	3"	32" x 20"	8" x 8"	36" x 24"		13 lbs	383
	XL-48/30-C	3"	42" x 26"	8" x 8"	48" x 30"		15 lbs	402
CUSTOM HEIGHT	-CUSTHT1	For height between 5" - 27.75"						+ 72
	-CUSTHT2	For height between 27.75" - 40.75"						+ 139
SLG	-SLG	Self-leveling Glides						+ 92

■ SINGLE COLUMN X-BASES PRICING

	PART #	COLUMN DIAMETER	BASE SPREAD	MOUNTING PLATE SIZE	RECOMMENDED TOP SIZE		NET WEIGHT	LIST PRICE
					ROUND	SQUARE		
FIXED TOP BAR HEIGHT	<b>XL-24-42</b>	3"	20" x 20"	8" x 8"	20" - 24" Rd.	20" - 22" Sq.	15 lbs	353
	<b>XL-30-42</b>	3"	26" x 26"	8" x 8"	26" - 36" Rd.	26" - 30" Sq.	17 lbs	363
	<b>XL-36-42</b>	3"	32" x 32"	8" x 8"	32" - 42" Rd.	32" - 36" Sq.	19 lbs	370
	<b>XL-42-42</b>	3"	36" x 36"	8" x 8"	36" - 48" Rd.	36" - 42" Sq.	21 lbs	378
	<b>XL-48-42</b>	3"	42" x 42"	8" x 8"	42" - 52" Rd.	42" - 48" Sq.	23 lbs	389
					RECTANGULAR			
	<b>XL-36/24-42</b>	3"	32" x 20"	8" x 8"	36" x 24"		13 lbs	370
	<b>XL-48/30-42</b>	3"	42" x 26"	8" x 8"	48" x 30"		15 lbs	389

## 4 & 5 COLUMN X-BASES

Fabricated 14 gauge steel with steel endcaps and threaded inserts for levelers or casters.

Bolted construction featuring 4-columns or 5-columns.



4XL-38



4XL-38-C



5XL-48

### FEATURES

UNIT HEIGHT: 27.75"

MOUNTING PLATE: 4 column base - (4) 4" x 4" x 7/32" steel | 5 column base - (5) 10" x 10" cast spider

LEVELING GLIDES: 1-3/8" diameter plastic with steel threaded inserts

FINISH: Stock color is Black

PACKAGING: 4 column bases are packaged in 1 box | 5 column bases are packaged in 2 boxes

### OPTIONS

BAR HEIGHT: Specify -42. 4 column base only.

CASTERS: Specify -C. 2" dual-wheel locking caster, 112 lbs capacity

SELF-LEVELING

GLIDES: Specify -SLG

### 4 COLUMN X-BASES | 5 COLUMN X-BASES | PRICING

PART #	UNIT HEIGHT	COLUMN DIAMETER	BASE SPREAD	MOUNTING PLATE SIZE	RECOMMENDED TOP SIZE	NET WEIGHT	LIST PRICE
4XL-38	27.75"	2"	38" x 38"	(4) 4" x 4"	42" - 60" Rd.	34 lbs	582
					42" - 60" Sq.		
4XL-38-C	27.75"	2"	38" x 38"	(4) 4" x 4"	42" - 60" Rd.	34 lbs	662
					42" - 60" Sq.		
4XL-38-42	40.75"	2"	38" x 38"	(4) 4" x 4"	42" - 60" Rd.	44 lbs	850
					42" - 60" Sq.		
5XL-48	27.75"	2"	48" x 48"	(5) 10" x 10"	60" - 84" Rd.	37 lbs	634
					60" - 72" Sq.		
5XL-48-C	27.75"	2"	48" x 48"	(5) 10" x 10"	60" - 84" Rd.	37 lbs	714
					60" - 72" Sq.		
-SLG	Self-leveling Glides						+ 92

## SIENNA ROUND & SQUARE BASES

Sienna bases provide a modern look for offices, breakrooms, and training rooms. These bases feature a 3" column with 3/8" thick laser-cut solid steel and flush-mounted adjustable glides.



C3-22FPR



C342-2222FPS



Foot Ring Option

### ■ FEATURES

UNIT HEIGHT:	27.75" 40.75"
WELDED	
MOUNTING PLATE:	8" x 8" x 7/32" steel
COLUMN:	3" diameter
LEVELING GLIDES:	3/4" diameter plastic for leveling on uneven floors
FINISH:	Stock colors are Black (-BL) and Metallic Silver (-MS)
PACKAGING:	Bases are packed in 2 boxes; priced individually Footring is packaged 1 per box

### ■ OPTIONS

CUSTOM HEIGHT:	Specify -CUSTHT1 for height between 5" - 27.75" Specify -CUSTHT2 for height between 27.75" - 40.75"
SELF-LEVELING GLIDES:	Specify -SLG Round bases require 5 Self-leveling Glides Square bases require 4 Self-leveling Glides
FOOT RING:	Specify -FR-3. 12" high

## ■ SIENNA ROUND &amp; SQUARE BASES PRICING

PLATE TYPE	PART #	COLUMN DIAMETER	UNIT HEIGHT	PLATE SIZE	RECOMMENDED TOP DEPTH	NET WEIGHT	LIST PRICE (EACH)
ROUND	<b>C3-18FPR</b>	3"	27.75"	18" D	24" - 30"	38 lbs	535
	<b>C3-22FPR</b>	3"	27.75"	22" D"	30" - 36"	51 lbs	643
	<b>C3-26FPR</b>	3"	27.75"	26" D"	36" - 48"	67 lbs	772
	<b>C342-18FPR</b> bar height	3"	40.75"	18" D	24" - 30"	41 lbs	602
	<b>C342-22FPR</b> bar height	3"	40.75"	22" D"	30" - 36"	54 lbs	710
	<b>C342-26FPR</b> bar height	3"	40.75"	26" D"	36" - 48"	70 lbs	839
	<b>C342-18FPR-FR</b> with foot ring	3"	40.75"	18" D	24" - 30"	47 lbs	712
	<b>C342-22FPR-FR</b> with foot ring	3"	40.75"	22" D"	30" - 36"	60 lbs	820
	<b>C342-26FPR-FR</b> with foot ring	3"	40.75"	26" D"	36" - 48"	76 lbs	949
	<b>-SLG</b>	Self-leveling Glides					+ 115
SQUARE	<b>C3-1818FPS</b>	3"	27.75"	18" x 18"	24" - 30"	46 lbs	535
	<b>C3-2222FPS</b>	3"	27.75"	22" x 22"	30" - 36"	65 lbs	643
	<b>C3-2626FPS</b>	3"	27.75"	26" x 26"	36" - 48"	86 lbs	772
	<b>C342-1818FPS</b> bar height	3"	40.75"	18" x 18"	24" - 30"	49 lbs	602
	<b>C342-2222FPS</b> bar height	3"	40.75"	22" x 22"	30" - 36"	68 lbs	710
	<b>C342-2626FPS</b> bar height	3"	40.75"	26" x 26"	36" - 48"	89 lbs	839
	<b>C342-1818FPS-FR</b> with foot ring	3"	40.75"	18" x 18"	24" - 30"	55 lbs	712
	<b>C342-2222FPS-FR</b> with foot ring	3"	40.75"	22" x 22"	30" - 36"	74 lbs	820
	<b>C342-2626FPS-FR</b> with foot ring	3"	40.75"	26" x 26"	36" - 48"	95 lbs	949
	<b>-SLG</b>	Self-leveling Glides					+ 92
OPTIONS	<b>-CUSTHT1</b>	For height between 5" - 27.75"					+ 72
	<b>-CUSTHT2</b>	For height between 27.75" - 40.75"					+ 139

## SIENNA X BASES

Sienna X bases were designed for breakroom or conference room applications. The floor plate is heavy-duty 3/8" thick laser-cut solid steel.



C3-2626FPP



4C3-4848FPP



4C342-4848FPP

## ■ FEATURES

UNIT HEIGHT:	27.75"   40.75"
WELDED MOUNTING PLATE:	8" x 8" x 7/32" steel
COLUMN:	Single column - 3" diameter 4 columns - 3" diameter
LEVELING GLIDES:	2-3/8" diameter plastic with steel threaded inserts
FINISH:	Stock colors are Black (-BL) and Metallic Silver (-MS)
PACKAGING:	Single column X base is packaged in 2 boxes 4 column X base is packaged in 5 boxes

## ■ OPTIONS

CUSTOM HEIGHT:	Specify -CUSTHT1 for height between 5" - 27.75" Specify -CUSTHT2 for height between 27.75" - 40.75"
BAR HEIGHT:	Specify -42
CASTERS:	Specify -SC . 3" locking skate wheel caster with 112 lbs capacity
SELF LEVELING GLIDES:	Specify -SLG



■ SIENNA X BASES PRICING

COLUMNS	HEIGHT	PART #	COLUMN DIAMETER	UNIT HEIGHT	BASE SPREAD	RECOMMENDED TOP SIZE	NET WEIGHT	LIST PRICE (EACH)
1	STANDARD	C3-2626FPP	3"	27.75"	26" x 26"	30" - 36" DIA	26 lbs	612
		C3-3232FPP	3"	27.75"	32" x 32"	36" - 42" DIA	32 lbs	693
		C3-3636FPP	3"	27.75"	36" x 36"	42" - 48" DIA	39 lbs	806
	BAR	C342-2626FPP	3"	40.75"	26" x 26"	30" - 36" DIA	46 lbs	679
		C342-3232FPP	3"	40.75"	32" x 32"	36" - 42" DIA	49 lbs	760
		C342-3636FPP	3"	40.75"	36" x 36"	42" - 48" DIA	65 lbs	873
	CUSTOM	-CUSTHT1	For height between 5" - 27.75"					+ 72
		-CUSTHT2	For height between 27.75" - 40.75"					+ 139
4	STANDARD	4C3-4848FPP	3"	27.75"	48" x 48"	54" - 72" RD	90 lbs	1,109
	BAR	4C342-4848FPP	3"	40.75"	48" x 48"	54" - 72" DIA	100 lbs	1,377
	CUSTOM	-CUSTHT1	For height between 5" - 27.75"					+ 288
		-CUSTHT2	For height between 27.75" - 40.75"					+ 556
OPTIONS	CASTERS	-SC	Skate Casters					+ 136
	GLIDES	-SLG	Self-leveling Glides					+ 92

## SIENNA CAFÉ POWER BASES



Sienna Café Power low-profile bases are an authentic meeting solution conveniently allowing to charge via power or USB; a power cord runs through the base column for a clean look. Power is sold separately.

The effortless elegance of Node's clean, flush-mount design is sure to complement a wide range of aesthetics, stylish plated or powder coat finish belies a robust, die-cast construction. Refined but versatile, Node offers a range of power, data, and USB configurations.



Node Receptacle



CP-22FPR-3



CP-2626FPP

### FEATURES

UNIT HEIGHT:	27.75"
WELDED MOUNTING PLATE:	12.5" x 7" x 2.5" steel
COLUMN:	3" diameter
LEVELING GLIDES:	2 3/8" diameter plastic with steel threaded inserts
FINISH:	Stock: Black (-BL) & Metallic Silver (-MS)
PACKAGING:	Bases are packed in 4 boxes
ELECTRICAL:	15 Amp power per outlet and 2 Amp per USB port, 120" power cord Black or Silver

### BASE OPTIONS

BAR HEIGHT:	Specify -42
SELF LEVELING GLIDES:	Specify -SLG Round bases use 5   X bases use 4
FOOT RING:	Specify -FR-3. 12" high

### ELECTRICAL OPTIONS

- 2-Power
- 1-Power / 1 USB port

■ SIENNA CAFÉ POWER BASES PRICING

	PART #	COLUMN DIAMETER	UNIT HEIGHT	PLATE/ BASE SPREAD	RECOMMENDED TOP SIZE	NET WEIGHT	LIST PRICE (EACH)
ROUND BASE	CP-22FPR-3	3"	27.75"	22" D	30"- 36"	51 lbs	693
	CP-22FPR-4	4"	27.75"	26" D	30"- 36"	55 lbs	849
	CP-22FPR-3-42 bar height	3"	40.75"	22" D	30"- 36"	70 lbs	760
	CP-22FPR-4-42 bar height	4"	40.75"	26" D	30"- 36"	74 lbs	916
	-SLG	Self-leveling Glides					+ 115

X BASE	CP-2626FPP	3"	27.75"	26" x 26"	30"- 36"	26 lbs	691
	CP-3232FPP	3"	27.75"	32" x 32"	36"- 42"	32 lbs	769
	CP-3636FPP	3"	27.75"	36" x 36"	42"- 48"	39 lbs	913
	CP-2626FPP-42 bar height	3"	40.75"	26" x 26"	30"- 36"	46 lbs	758
	CP-3232FPP-42 bar height	3"	40.75"	32" x 32"	36"- 42"	49 lbs	836
	CP-3636FPP-42 bar height	3"	40.75"	36" x 36"	42"- 48"	65 lbs	980
	-SLG	Self-leveling Glides					+ 92

OPTIONS	-FR-3		12"			6 lbs	+ 110
---------	-------	--	-----	--	--	-------	-------

	PART #	COLOR	CONFIGURATION	LIST PRICE (EACH)
ELECTRICAL	NODE-1PU-120-MS	Metallic Silver	1 Power / USB Duplex	+ 373
	NODE-1PU-120-B	Black	1 Power / USB Duplex	+ 373
	NODE-2PU-120-MS	Metallic Silver	2 Power	+ 271
	NODE-2PU-120-B	Black	2 Power	+ 271

## SIENNA RECTANGLE BASE

Sienna Rectangle bases were designed for conference tables and collaboration applications. This base features two 3" diameter columns and a heavy-duty solid steel rectangular floor plate 3/8" thick.

## FEATURES

UNIT HEIGHT:	27.75"
	40.75
WELDED	
MOUNTING PLATE:	6" x 6" x 7/32" steel
COLUMN:	3" diameter
LEVELING GLIDES:	3/4" diameter plastic with steel threaded inserts
FINISH:	Stock colors are Black (-BL) and Metallic Silver (-MS)
PACKAGING:	Base is packaged in 3 boxes



2C3-2230FPR

## OPTIONS

CUSTOM HEIGHT:	Specify -CUSTHT1 for height between 5" - 27.75"
	Specify -CUSTHT2 for height between 27.75" - 40.75"
BAR HEIGHT:	Specify -42
SELF LEVELING GLIDES:	Specify -SLG

## SIENNA RECTANGLE BASE PRICING

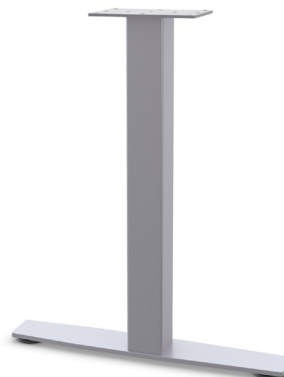
BASE HEIGHT	# OF COLUMNS	PART #	COLUMN DIAMETER	UNIT HEIGHT	PLATE SIZE	RECOMMENDED TOP SIZE	NET WEIGHT	LIST PRICE (EA)
STANDARD	2	2C3-2230FPR	3"	27.75"	22" x 30"	30" - 36" x 42" - 72"	92 lbs	943
BAR HEIGHT	2	2C3-2230FPR-42	3"	40.75"	22" x 30"	30" - 36" x 42" - 72"	101 lbs	1,076
CUSTOM HEIGHT	2	-CUSTHT1	For height between 5" - 27.75"					+ 144
	2	-CUSTHT2	For height between 27.75" - 40.75"					+ 277
GLIDES		-SLG	Self-leveling Glides					+ 138

## SIENNA T-LEG & C-LEG

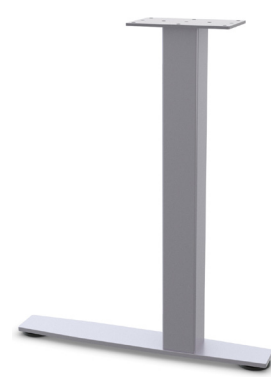
Sienna T-Leg and C-Leg feature an elegant foot design for conference or training room tables. The bases are constructed with 3" diameter columns and a floor plate made of heavy-duty 3/8" thick laser-cut solid steel.



2C3-2LGTL-36



LGTL-24



LGCL-24

### ■ FEATURES

UNIT HEIGHT:	27.75"   40.75"
WELDED	Single column 5" x 8"
MOUNTING PLATE:	Dual column 6" x 6"
COLUMN:	Single column 2-3/4" x 2-3/4" square Dual column 3" diameter
LEVELING GLIDES:	2-3/8" diameter plastic for leveling on uneven floors
FINISH:	Stock colors are Black (-BL) and Metallic Silver (-MS)
PACKAGING:	2-floor plates per box Single column bases are packaged in 2 boxes Dual column bases are packaged in 3 boxes Priced individually

### ■ OPTIONS

CUSTOM HEIGHT FOR 1 & 2 COLUMN:	Specify -CUSTHT1 for height between 5" - 27.75" Specify -CUSTHT2 for height between 27.75" - 40.75"
BAR HEIGHT FOR 1 & 2 COLUMN:	Specify -42.
CASTERS:	Specify -SC. 2.5" locking skate wheel caster with 112 lbs capacity
SELF LEVELING GLIDES:	Specify -SLG

## ■ SIENNA T-LEG &amp; C-LEG BASE PRICING

LEG TYPE	LEG HEIGHT	PART #	UNIT HEIGHT	BASE SPREAD	RECOMMENDED TOP SIZE	NET WEIGHT	LIST PRICE (EACH)
T-LEG SINGLE COLUMN	STANDARD HEIGHT	LGTL-18	27.75"	16"	18" - 20"D x 24" - 120"W	15 lbs	252
		LGTL-24	27.75"	22"	24" D x 36" - 84"W	17 lbs	273
		LGTL-30	27.75"	26"	30" - 36"D x 36" - 84"W	18 lbs	286
		LGTL-36	27.75"	32"	36"D x 42" - 96"W	20 lbs	322
	BAR HEIGHT	LGTL-18-42	40.75"	16"	18" - 20"D x 24" - 120"W	18 lbs	319
		LGTL-24-42	40.75"	22"	24" D x 36" - 84"W	20 lbs	340
		LGTL-30-42	40.75"	26"	30" - 36"D x 36" - 84"W	21 lbs	352
		LGTL-36-42	40.75"	32"	36"D x 42" - 96"W	23 lbs	388
C-LEG SINGLE COLUMN	STANDARD HEIGHT	LGCL-24	27.75"	22"	24"D x 36" - 84"W	17 lbs	273
		LGCL-30	27.75"	26"	30" - 36"D x 36" - 84"W	18 lbs	286
	BAR HEIGHT	LGCL-24-42	40.75"	22"	24"D x 36" - 84"W	20 lbs	340
		LGCL-30-42	40.75"	26"	30" - 36"D x 36" - 84"W	21 lbs	353
OPTIONS	CUSTOM HEIGHT	-CUSTHT1	For height between 5" - 27.75"				+ 72
		-CUSTHT2	For height between 27.75" - 40.75"				+ 139
	CASTERS	-SC	Skate Casters				+ 68
	GLIDES	-SLG	Self-Leveling Glides				+ 46

## ■ SIENNA 2T-LEG BASE PRICING

LEG TYPE	LEG HEIGHT	PART #	UNIT HEIGHT	BASE SPREAD	RECOMMENDED TOP SIZE	NET WEIGHT	LIST PRICE (EACH)
T-LEG DUAL COLUMN	STANDARD HEIGHT	2C3-2LGTL-36	27.75"	32"	30" - 36"D x 42" - 96"W	29 lbs	454
	BAR HEIGHT	2C3-2LGTL-36-42	40.75"	32"	30" - 36"D x 42" - 96"W	35 lbs	588
OPTIONS	CUSTOM HEIGHT	-CUSTHT1	For height between 5" - 27.75"				+ 144
		-CUSTHT2	For height between 27.75" - 40.75"				+ 277
	CASTERS	-SC	Skate Casters				+ 68
	GLIDES	-SLG	Self-leveling Glides				+ 46

## SQUARE END BASE

Fabricated 14 gauge 2" x 1" rectangular tubular steel with threaded inserts for glides.  
Welded construction. Bases mount flush with the table edge.



RSSB-24



Detail: base placement

### FEATURES

UNIT HEIGHT:	27.75"
WELDED	
MOUNTING PLATE:	4-3/4" x 3-1/2" x 7/32"
COLUMN:	14 gauge steel, 2" x 1" rectangular tube profile
LEVELING GLIDES:	1-3/8" diameter nylon glide
FINISH:	Stock color is Metallic Silver
PACKAGING:	Bases are packaged 2 per box, priced individually

### SQUARE END BASE PRICING

PART #	BASE SPREAD	RECOMMENDED TOP DEPTH	NET WEIGHT	LIST PRICE (EACH)
RSSB-24	24"	24"	14 lbs	327
RSSB-30	30"	30"	15 lbs	356

## SQUARE H-LEG

Fabricated 14 gauge 2" x 1" rectangular tubular steel with rectangular adjustable glides.  
Welded construction. Bases mount flush with the table edge.



RSHL-24



Detail: base placement



Detail: rectangular adjustable glide

### FEATURES

UNIT HEIGHT:	27.75"
WELDED MOUNTING PLATE:	4-3/4" x 3-1/2" x 7/32" steel
COLUMN:	14 gauge steel, 2" x 1" rectangular tube profile
LEVELING GLIDES:	1-3/8" diameter nylon glide
FINISH:	Stock color is Metallic Silver
PACKAGING:	Bases are packaged 2 per box, priced individually

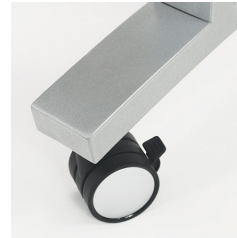
### SQUARE H-LEG PRICING

PART #	BASE SPREAD	RECOMMENDED TOP DEPTH	NET WEIGHT	LIST PRICE (EACH)
RSHL-24	24"	24"	14 lbs	289
RSHL-30	30"	30"	15 lbs	327



## STRUCTURE T-LEG &amp; C-LEG

Structure bases present a clean and elegant look that complements various interiors. They feature 14 gauge 2" x 1" rectangular steel, bolted welded construction, and threaded inserts for glides.



Caster



RS2T-24



RS2T-24-C



RS2C-24

## FEATURES

UNIT HEIGHT:	27.75"
WELDED MOUNTING PLATE:	5" x 11" x 7/32" steel
COLUMN:	14 gauge steel, 2" x 1" rectangular tube profile
LEVELING GLIDES:	1-3/8" diameter nylon glide
CASTERS:	1-3/4" dual-wheel locking caster with silver cap, 112 lbs capacity
FINISH:	Stock color is Metallic Silver
PACKAGING:	Bases are packaged 2 per box, priced individually

## OPTIONS

CASTERS:	Specify -C2
----------	-------------

## STRUCTURE T-LEG & C-LEG PRICING

LEG TYPE	PART #	BASE SPREAD	RECOMMENDED TOP SIZE	NET WEIGHT	LIST PRICE (EACH)
T-LEG	RS2T-18	16"	18" D x 48" - 84W	10 lbs	239
	RS2T-24	22"	24" D x 36" - 84W	11 lbs	246
	RS2T-30	26"	30" D x 36" - 84W	12 lbs	255
C-LEG	RS2C-24	22"	24" D x 36" - 84W	11 lbs	224
	RS2C-30	26"	30" D x 36" - 84W	12 lbs	255

STRUCTURE POST LEG

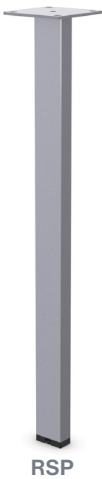
Fabricated 14 gauge 2" x 1" rectangular tubular steel post legs. Welded construction.

FEATURES

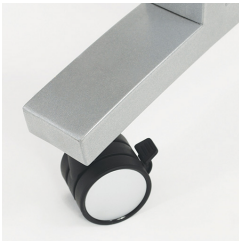
- UNIT HEIGHT: 27.75"
- WELDED MOUNTING PLATE: 4" x 4" x 7/32"
- COLUMN: 14 gauge steel, 2" x 1" rectangular tube profile
- LEVELING GLIDES: Rectangular adjustable glide
- CASTERS: 1-3/4" dual-wheel locking caster with silver cap, 112 lbs capacity
- FINISH: Stock color is Metallic Silver
- PACKAGING: Bases are packaged 4 per box, priced individually



Detail: rectangular adjustable glide



RSP



Caster

STRUCTURE POST LEG PRICING

PART #	UNIT HEIGHT	COLUMN SIZE	NET WEIGHT	LIST PRICE (EACH)
RSP	27.75"	2" x 1"	5 lbs	107
RSP-C2 with casters	27.75"	2" x 1"	5 lbs	112

# STRUCTURE 4X-BASE

Structure bases present a clean and elegant look that complements various interiors. Structure X-Base features 14 gauge 2" x 1" rectangular columns welded to a mounting plate. The one-piece foot is bolted to a column and features threaded inserts for glides.



## ■ FEATURES

UNIT HEIGHT:	14.75" Occasional Height 27.75" Standard Height 40.75" Bar Height
WELDED MOUNTING PLATE:	8" x 8" x 7/32"
COLUMN:	14 gauge steel, (4) 2" x 1" rectangular tube profile
LEVELING GLIDES:	1-3/8" diameter nylon glide
FINISH:	Stock color is Metallic Silver
PACKAGING:	Bases are packaged in 2 boxes

■ STRUCTURE 4X BASE PRICING

BASE TYPE	PART #	UNIT HEIGHT	BASE SPREAD	RECOMMENDED TOP SIZE	NET WEIGHT	LIST PRICE (EACH)
OCCASIONAL HEIGHT	RS4X-24-16	14.75"	22" x 22"	24"	12 lbs	638
	RS4X-30-16	14.75"	26" x 26"	30"	13 lbs	662
	RS4X-36-16	14.75"	32" x 32"	36"	14 lbs	724
	RS4X-42-16	14.75"	38" x 38"	42" - 48"	15 lbs	792
STANDARD HEIGHT	RS4X-24	27.75"	22" x 22"	24"	16 lbs	692
	RS4X-30	27.75"	26" x 26"	30"	17 lbs	716
	RS4X-36	27.75"	32" x 32"	36"	18 lbs	778
	RS4X-42	27.75"	38" x 38"	42" - 48"	19 lbs	846
BAR HEIGHT	RS4X-24-42	40.75"	22" x 22"	24"	21 lbs	760
	RS4X-30-42	40.75"	26" x 26"	30"	22 lbs	784
	RS4X-36-42	40.75"	32" x 32"	36"	23 lbs	846
	RS4X-42-42	40.75"	38" x 38"	42" - 48"	24 lbs	914

## STRUCTURE CUBE

Structure bases present a clean and elegant look that complements various interiors. Structure Cube base features 14 gauge 2" x 1" rectangular steel, bolted/welded construction, and threaded inserts for glides.



RSXO-36

### ■ FEATURES

UNIT HEIGHT:	27.75"
WELDED MOUNTING PLATE:	4" x 4" x 7/32"
COLUMN:	14 gauge steel, 2" x 1" rectangular tube profile
LEVELING GLIDES:	1-3/8" diameter nylon glide
FINISH:	Stock color is Metallic Silver
PACKAGING:	Bases are packaged 1 per box

### ■ STRUCTURE CUBE PRICING

PART #	BASE SPREAD	RECOMMENDED TOP SIZE	NET WEIGHT	LIST PRICE (EACH)
<b>RSXO-32</b>	32" x 32"	36" - 42"	30 lbs	562
<b>RSXO-36</b>	36" x 36"	48" - 54"	31 lbs	630
<b>RSXO-42</b>	42" x 42"	60" - 72"	35 lbs	716

## SPRING CLIP HEIGHT ADJUSTABLE BASES

Bolted construction 14 gauge tubular steel. Legs adjust in 1" increments by depressing the spring clip pin to release the outer column for height adjustment. When realigned with the outer column holes, the pin snaps back into a locking position. A thumbscrew locks the column in place.



SPYL-AH



SPYL-AH-C



TL-18AH



2TL-24AH



1ATL-24AH

### ■ FEATURES

ADJUSTMENT RANGE:	24.75" to 34.75"
WELDED MOUNTING PLATE:	7/23" steel
COLUMN:	2" diameter on outer column
LEVELING GLIDES:	1-3/8" diameter plastic with steel threaded inserts
FINISH:	Stock color is Black
PACKAGING:	Bases are packaged 2 per box SPYL-AH are packaged 4 per box Priced individually

### ■ OPTIONS

CASTERS:	The base height will increase 2" Specify -C CL-AH, 2CL-AH and 2TL-AH bases Specify -SC for SPYL-AH and 1ATL-AH
----------	--

■ SPRING CLIP HEIGHT ADJUSTABLE BASES PRICING

LEG TYPE	PART #	BASE SPREAD	MOUNTING PLATE SIZE	RECOMMENDED TOP DEPTH	NET WEIGHT	LIST PRICE
POST LEG	<b>SPYL-AH</b>	1.5" DIA	4" x 4"	-	6 lbs	150
	<b>SPYL-AH-SC</b> Skate Caster	1.5" DIA	4" x 4"	-	6 lbs	184
C-LEG	<b>CL-18-AH</b>	16"	5" x 8"	18" - 22"	9 lbs	303
	<b>CL-24-AH</b>	22"	5" x 8"	24" - 28"	10 lbs	307
	<b>CL-30-AH</b>	26"	5" x 8"	28" - 30"	11 lbs	311
	<b>-C</b>	Caster				+ 40
T-LEG	<b>TL-18-AH</b>	16"	5" x 8"	18" - 20"	9 lbs	303
	<b>TL-20-AH</b>	18"	5" x 8"	20" - 22"	9 lbs	303
	<b>TL-22-AH</b>	20"	5" x 8"	22" - 24"	10 lbs	307
	<b>TL-24-AH</b>	22"	5" x 8"	24" - 28"	10 lbs	307
	<b>TL-30-AH</b>	26"	5" x 8"	28" - 30"	10 lbs	311
	<b>-C</b>	Caster				+ 40
C-LEG DUAL COLUMN	<b>2CL-24-AH</b>	22"	(2) 5" x 8"	18" - 22"	11 lbs	487
	<b>2CL-30-AH</b>	26"	(2) 5" x 8"	24" - 28"	9 lbs	490
	<b>-C</b>	Caster				+ 40
T-LEG DUAL COLUMN	<b>2TL-24-AH</b>	22"	(2) 5" x 8"	20" - 22"	9 lbs	487
	<b>2TL-30-AH</b>	26"	(2) 5" x 8"	22" - 24"	10 lbs	490
	<b>2TL42-AH</b>	36"	(2) 5" x 8"	24" - 28"	10 lbs	512
	<b>2TL-48-AH</b>	48"	(2) 5" x 8"	28" - 30"	10 lbs	525
	<b>-C</b>	Caster				+ 40

PATRIOT ELECTRIC HEIGHT ADJUSTABLE BASE

The Patriot Electric base offers an optimal solution for any adjustable height requirement in the office. This GSA-approved base is an excellent first step towards improving the efficiency and well-being of your organization while remaining budget-conscious.



PAT-3STG-24T



2-stage



3-stage



Up/down switch (standard)



Programmable digital switch

■ FEATURES

FEET:	T-Leg   C-Leg
COLUMN:	2-stage base: height range 27" - 46" with 19" stroke 3-stage base: height range 24" - 47" with 24" stroke
CONTROLLER:	Up-down switch comes standard or optional programmable switch
FINISH:	Stock colors are Black, specify -B; and Metallic Silver specify -MS Additional colors available with an extended lead time
PACKAGING:	2 column base is packaged in 1 box, 3 column bases are packed in 3 boxes

■ ELECTRICAL INFORMATION

MOTOR:	Dual motor	MOTOR NOISE:	<43 dB
MAX LIFTING SPEED:	1-2/8"/sec	POWER CONSUMPTION:	.3W
OVERLOAD PROTECTION:	200 lbs	FUNCTIONS:	Soft-Start-Stop

■ OPTIONS

CONTROLLER:	Specify PAT-DIG-HS for Digital Display with Memory Preset
STEEL TABLE SUPPORT:	42", 54"
CASTERS:	Specify PAT-C



GS-28F-0015W



## ■ PATRIOT ELECTRIC HEIGHT ADJUSTABLE BASES PRICING

STAGE	PART #	BASE TYPE	# OF COLUMNS	BASE SPREAD	RECOMMENDED TOP SIZE	NET WEIGHT	LIST PRICE (EACH)
2-STAGE	PAT-2STG-24T	T-Leg	2	22"	24" D x 48-84" W	55 lbs	1,730
	PAT-2STG-30T	T-Leg	2	28"	30" D x 48-84" W	55 lbs	1,745
	PAT-2STG-3COL-24T	T-Leg	3	22"	24" D x 60-72" W	80 lbs	2,600
	PAT-2STG-3COL-30T	T-Leg	3	28"	30" D x 60-72" W	80 lbs	2,675
	PAT-2STG-24C	C-Leg	2	22"	24" D x 48-84" W	55 lbs	1,730
	PAT-2STG-30C	C-Leg	2	28"	30" D x 48-84" W	55 lbs	1,745
	PAT-2STG-3COL-24C	C-Leg	3	22"	24" D x 60-72" W	80 lbs	2,600
	PAT-2STG-3COL-30C	C-Leg	3	28"	30" D x 60-72" W	80 lbs	2,675
3-STAGE	PAT-3STG-24T	T-Leg	2	22"	24" D x 48-84" W	55 lbs	1,875
	PAT-3STG-30T	T-Leg	2	28"	30" D x 48-84" W	55 lbs	1,890
	PAT-3STG-3COL-24T	T-Leg	3	22"	24" D x 60-72" W	80 lbs	2,821
	PAT-3STG-3COL-30T	T-Leg	3	28"	30" D x 60-72" W	80 lbs	2,836
	PAT-3STG-24C	C-Leg	2	22"	24" D x 48-84" W	55 lbs	1,875
	PAT-3STG-30C	C-Leg	2	28"	30" D x 48-84" W	55 lbs	1,890
	PAT-3STG-3COL-24C	C-Leg	3	22"	24" D x 60-72" W	80 lbs	2,821
	PAT-3STG-3COL-30C	C-Leg	3	28"	30" D x 60-72" W	80 lbs	2,836
OPTIONS	PAT-DIG-HS	Digital Display with Memory Preset					+ 116
	STEEL TABLE SUPPORT	42"					+ 77
		54"					+ 87
	PAT-C	Casters					+ 154

Patriot Electric & Liberty Electric Bases Only 1 - 3 \$55 each | 4-15 \$33 each | 16 - 50 \$27 each | 51 + \$16 each  
 FOB: Alpharetta, GA; PPD & ADD

## LIBERTY ELECTRIC HEIGHT ADJUSTABLE BASE



LIBERTY-MS

Liberty Electric bases are made in the USA and filled with the versatility to optimize various work environments. Exceptional value, dual motors, and three metal finishes make it the industry's #1 choice for sit-to-stand tables.

Up/down switch  
(standard)Programmable  
digital switch

## FEATURES

**FEET:** T-Leg  
**COLUMN:** 2-stage base: height range 27" - 46" with 19" stroke  
**CONTROLLER:** Up-down switch comes standard; or optional programmable switch  
**FINISH:** Stock colors are Metallic Silver, specify -MS, Black, specify -B, and White specify -W  
**PACKAGING:** Bases are packaged in 1 box | Bases are pre-assembled

## ELECTRICAL INFORMATION

**MOTOR:** Dual motor  
**CONTROLLER:** Up-down switch comes standard | Specify PAT-DIG-HS for Digital Display with Memory Preset

PART #	BASE TYPE	# OF COLUMNS	BASE SPREAD	RECOMMENDED TOP SIZE	NET WEIGHT	LIST PRICE (EACH)
<b>LIBERTY</b>	T-Leg	2	22.24"	24" D x 48-72" W	55 lbs	1,268
<b>PAT-DIG-HS</b>	Digital Display with Memory Preset					+ 116

## HIKE ELECTRIC HEIGHT ADJUSTABLE BASE



PART #	BASE TYPE	# OF COL	BASE SPREAD	RECOMMENDED TOP SIZE	NET WT	LIST PRICE (EACH)
<b>HIKE-24</b>	T-Leg	2	22.24"	24" D x 48-72" W	55 lbs	814
<b>HIKE-30</b>	T-Leg	2	28.24"	30" D x 48-72" W	60 lbs	903

Metallic Silver specify -MS, Black, specify -B

Patriot Electric, Liberty Electric, and Hike Bases Only 1 - 3 \$55 each | 4-15 \$33 each | 16 - 50 \$27 each | 51 + \$16 each  
 FOB: Alpharetta, GA; PPD & ADD

## FOLDING T-LEG & C-LEG

FOLDING

The molded folding mechanism is operated by a lever that can be pushed up by hand or foot, making a positive connection in both open and closed positions allowing legs to lay flat when the table is 60" or longer. Rising brackets must be used to fold smaller tables.



CL-30-GFM



TL-30-GFM

### FEATURES

UNIT HEIGHT:	27.75"
COLUMN:	2" diameter
MECHANISM DIMENSION:	9" x 8" x 3"
RISING BRACKET:	Specify -RISER, is necessary for folding tables under 60" long
LEVELING GLIDES:	1-3/8" diameter plastic with steel threaded inserts
FINISH:	Stock color is Black
PACKAGING:	Bases are packaged in multiple boxes, priced individually

### OPTIONS

CASTERS:	Specify -C. 2" dual-wheel locking caster 112 lbs capacity
----------	---

### FOLDING T-LEG & C-LEG BASES PRICING

	PART #	UNIT HEIGHT	COLUMN DIAMETER	BASE SPREAD	RECOMMENDED TOP DEPTH	NET WEIGHT	LIST PRICE
C-LEG	CL-18-GFM	27.75"	2"	16"	18" - 22"	8.5 lbs	449
	CL-24-GFM	27.75"	2"	22"	24" - 28"	9.5 lbs	453
	CL-30-GFM	27.75"	2"	26"	28" - 30"	10 lbs	457
T-LEG	TL-18-GFM	27.75"	2"	16"	18" - 20"	8.5 lbs	449
	TL-20-GFM	27.75"	2"	18"	20" - 22"	8.5 lbs	449
	TL-22-GFM	27.75"	2"	20"	22" - 24"	9.5 lbs	453
	TL-24-GFM	27.75"	2"	22"	24" - 28"	9.5 lbs	453
	TL-30-GFM	27.75"	2"	26"	28" - 30"	10 lbs	457
OPTIONS	-C	Casters					+ 40

# KINGSTON FLIP BASE

The Kingston Flip base includes a set of two legs, a heavy tubular steel beam, a single-point release dual lock mechanism, and two hinges. The heavy-duty beam prevents the tabletop from sagging. Save space by nesting tables!



CLSF-2460-C



T-Leg nested tables



Release mechanism

## FEATURES

UNIT HEIGHT:	27.75"
MOUNTING PLATE:	5" x 8" x 7/32"
CASTERS:	Standard 2" locking casters are included with T-Legs. Arched T-Legs come standard with 3" locking skate wheel casters Both casters have a 112 lbs capacity
FINISH:	Stock color is Black (-BL) and Metallic Silver (-MS)
PACKAGING:	Bases are packaged 1 set (2 legs) in 1 box and beam in a separate box

■ KINGSTON FLIP C-LEG & T-LEG BASES PRICING

LEG TYPE	PART #	BASE SPREAD	RECOMMENDED TOP SIZE	NET WEIGHT	LIST PRICE
T-LEG	<b>TLSF-1848</b>	16" x 43"	18" x 48"	29 lbs	1,102
	<b>TLSF-1860</b>	16" x 55"	18" x 60"	31 lbs	1,121
	<b>TLSF-1872</b>	16" x 67"	16" x 72"	34 lbs	1,141
	<b>TLSF-2448</b>	22" x 43"	24" x 48"	29 lbs	1,102
	<b>TLSF-2460</b>	22" x 55"	24" x 60"	33 lbs	1,121
	<b>TLSF-2472</b>	22" x 67"	24" x 72"	36 lbs	1,141
	<b>TLSF-3048</b>	26" x 43"	30" x 48"	32 lbs	1,102
	<b>TLSF-3060</b>	26" x 55"	30" x 60"	34 lbs	1,121
	<b>TLSF-3072</b>	26" x 67"	30" x 72"	37 lbs	1,141
C-LEG	<b>CLSF-1848</b>	16" x 43"	18" x 48"	29 lbs	1,102
	<b>CLSF-1860</b>	16" x 55"	18" x 60"	31 lbs	1,121
	<b>CLSF-1872</b>	16" x 67"	16" x 72"	34 lbs	1,141
	<b>CLSF-2448</b>	22" x 43"	24" x 48"	29 lbs	1,102
	<b>CLSF-2460</b>	22" x 55"	24" x 60"	33 lbs	1,121
	<b>CLSF-2472</b>	22" x 67"	24" x 72"	36 lbs	1,141
	<b>CLSF-3048</b>	26" x 43"	30" x 48"	32 lbs	1,102
	<b>CLSF-3060</b>	26" x 55"	30" x 60"	34 lbs	1,121
	<b>CLSF-3072</b>	26" x 67"	30" x 72"	37 lbs	1,141

## TRANSFORM-2 BASE

Transform-2 is a versatile contemporary base with straight-on nesting in the flip-top application. Its lightweight material, casters, and one-handed activation allow anyone to flip and move tables quickly. A perforated steel modesty panel is an integral part of the base providing privacy and an elegant look simultaneously. In addition, a continuous heavy-duty beam prevents the top from sagging.



TF2-2460



Release  
Mechanism



Nested Transform-2 Tables

### FEATURES

STRUCTURE:	14 gauge 1.5" diameter tubular legs are connected by a modesty panel and a stretcher with the flip-top mechanism. The modesty panel attaches to the legs and extends 14" below the tabletop
UNIT HEIGHT:	28.75"
CASTERS:	Black dual-wheel locking 2-1/4" diameter, 112 lb capacity
FINISH:	Stock colors are Black (-BL) and Metallic Silver (-MS)
PACKAGING:	Each base is packaged in 2 boxes

### TRANSFORM-2 BASE PRICING

PART #	BASE SPREAD	RECOMMENDED TOP SIZE	NET WEIGHT	LIST PRICE
TF2-1848	17" x 47"	18" x 48"	34 lbs	603
TF2-1860	17" x 59"	18" x 60"	38 lbs	654
TF2-1872	17" x 71"	18" x 72"	42 lbs	705
TF2-2448	19" x 47"	24" x 48"	35 lbs	703
TF2-2460	19" x 59"	24" x 60"	39 lbs	756
TF2-2472	19" x 71"	24" x 72"	43 lbs	819

## CASTERS &amp; GLIDES

## CASTERS



## ■ STANDARD CASTER

2" locking dual-wheel hooded casters, nylon.  
25 mm x 8mm stem, 112 lbs capacity.

PART #	LIST PRICE
<b>C-1</b>	20



## ■ LOCKING SKATE WHEEL CASTER

3" in-line skate wheel caster with gray ribbed core.  
25mm x 8 mm stem, 112 lbs capacity.

PART #	LIST PRICE
<b>SC-1</b>	34

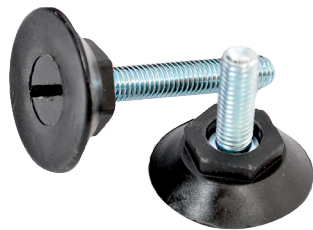


## ■ HARD SURFACE CASTER

2" locking dual-wheel hooded caster with soft polyurethane for use on hard surfaces.  
22 mm x 8mm stem, 112 lbs capacity.

PART #	LIST PRICE
<b>HSC-1</b>	27

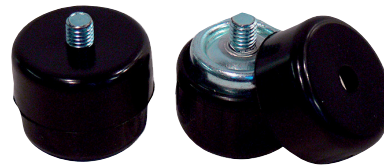
## GLIDES



## ■ ADJUSTABLE LEVELING GLIDE

Metric thread: can be used on most Special-T table bases, 1-3/8" diameter nylon cap; 2" long.

PART #	LIST PRICE
<b>ALG-1</b>	4



## ■ SELF-LEVELING GLIDE

Automatically stabilizes the table. Easy to install. Requires no adjustment. Automatically adjusts 5/16" on any uneven surface. 1-3/8" diameter nylon cap. SLG-M8 features an 8 mm stem.

PART #	LIST PRICE
<b>SLG-1</b>	23
<b>SLG-M8</b>	23

## PERFORATED STEEL MODESTY PANELS

Perforated steel modesty panels provide stability, privacy, and style to any table. The panel attaches directly to the work surface with screws. It is fabricated with 18 gauge steel and includes a built-in wire channel for wire management.



### FEATURES

- STRUCTURE:** Perforation pattern is 3/16" diameter holes spaced 1-3/4" apart. Cable cutout is 1-1/2" x 3"  
The 3" x 3" wire channel runs through the bottom of the modesty panel
- PANEL HEIGHT:** 10" H
- ATTACHMENT:** Modesty panel attaches to the top with screws
- FINISH:** Stock color is Black
- PACKAGING:** Packaged 2 per box, priced individually



### PERFORATED STEEL MODESTY PANELS PRICING

PART #	LENGTH	HEIGHT	RECOMMENDED TOP SIZE	# OF CABLE CUTOUTS	CABLE CUTOUT POSITION	NET WEIGHT	LIST PRICE
<b>MP-1030</b>	30"	10"	30"	1	center	10 lbs	200
<b>MP-1042SF</b>	42"	10"	42"	1	center	13 lbs	260
<b>MP-1048SF</b>	48"	10"	48"	1	center	14 lbs	303
<b>MP-1054SF</b>	54"	10"	54"	1	center	15 lbs	347
<b>MP-1060SF</b>	60"	10"	60"	2	12" from each end	16 lbs	365
<b>MP-1066SF</b>	66"	10"	66"	2	12" from each end	20 lbs	408
<b>MP-1072SF</b>	72"	10"	72"	2	12" from each end	22 lbs	446
<b>MP-1084SF</b>	84"	10"	84"	3	1 in the center 2 12" from each end	25 lbs	515
<b>MP-1096SF*</b>	96"	10"	96"	3	1 in the center 2 12" from each end	29 lbs	560

\*An Oversize Fee has been implemented by freight carriers for all LTL shipments for pallets 8' and over.  
96" -108" - additional \$250.00 | 109" -168" - additional \$350.00 | Per custom pallet



## FROSTED ACRYLIC MODESTY PANELS AND PRIVACY SCREENS

Frosted Acrylic Privacy Screens and Modesty panels provide an attractive and durable option to traditional acrylic products. The superiority of Frosted Acrylic is in its excellent light diffusion, rigidity, and smudge-resistant surface. It is truly a high-quality product designed for years of performance.

### FEATURES

#### PANELS

**STRUCTURE:** Scratch and smudge resistant with smooth edges and corners

**COLOR:** Frosted White

**SIZE:** 14" H x 47" L, 59" L, 71" L ; 3/8" thick

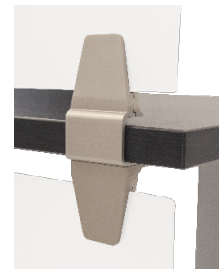
#### BRACKETS

**MATERIAL:** Extruded aluminum

**STRUCTURE:** Durable, permanent attachment with 2 screws per bracket underneath the table for a seamless look when used in combination with the privacy screens and modesty panels. Compatible with 1" - 1.25" tabletops

**2 BRACKETS** Are included for 47" and 59" panels

**3 BRACKETS** Are included for 71" panels



### FROSTED ACRYLIC MODESTY PANELS AND PRIVACY SCREENS PRICING

TYPE	PART #	SIZE	RECOMMENDED TOP SIZE	NET WEIGHT	LIST PRICE
MODESTY PANEL	<b>AP-1248-MP</b>	12" x 47"	48" L	5 lbs	461
	<b>AP-1260-MP</b>	12" x 59"	60" L	6 lbs	538
	<b>AP-1272-MP</b>	12" x 71"	72" L	7 lbs	616
PRIVACY SCREEN	<b>AP-1448-PS-BR</b>	14" x 47"	48" L	5 lbs	400
	<b>AP-1460-PS-BR</b>	14" x 59"	60" L	6 lbs	466
	<b>AP-1472-PS-BR</b>	14" x 71"	72" L	7 lbs	533

## LAMINATE MODESTY PANELS

Laminate modesty panels can match the tabletop or make a statement with a different color laminate.



#### ■ FEATURES

- PANEL SIZE:** 3/4" thick, 10" high and 1/4" shorter than the top length
- ATTACHMENT:** Permanently attaches directly to the table  
Mounting brackets are included
- COLORS:** Any standard WilsonArt or Formica laminate on both sides
- EDGE:** PVC

#### ■ LAMINATE MODESTY PANELS PRICING

PART #	LENGTH	RECOMMENDED TOP LENGTH	NET WEIGHT	LIST PRICE
<b>MPL-1036</b>	35.75"	36"	7 lbs	238
<b>MPL-1042</b>	41.75"	42"	8 lbs	255
<b>MPL-1048</b>	47.75"	48"	9 lbs	267
<b>MPL-1054</b>	53.75"	54"	10 lbs	282
<b>MPL-1060</b>	59.75"	60"	11 lbs	284
<b>MPL-1066</b>	65.75"	66"	12 lbs	308
<b>MPL-1072</b>	71.75"	72"	13 lbs	362
<b>MPL-1078</b>	77.75"	78"	15 lbs	374
<b>MPL-1084</b>	83.75"	84"	16 lbs	425
<b>MPL-1096*</b>	95.75"	96"	18 lbs	486

\*An Oversize Fee has been implemented by freight carriers for all LTL shipments for pallets 8' and over.  
96"-108" - additional \$250.00 | 109"-168" - additional \$350.00 | Per custom pallet

## POWER &amp; DATA

## BURELE™



Burele brings customizability to a new level. That's why it lives up here on the work surface, where work gets done. It offers blended power options, including USB ports for phones, tablets, and more. Personalize its sleek, high-gloss plastic finish with color, artwork, and messaging.

## OPTIONS

- 2 Power, QuickShip in Black or White

## DESCRIPTION

- Colors: Black or White
- Removable above surface mount
- 72" plug power cord

## CUSTOM FEATURES - CONTACT CUSTOMER SERVICE

- More finish options
- 120" plug power cord



## ■ BURELE™ PRICING

PART #	COLOR	CONFIGURATION	LIST PRICE
<b>BURELE-2P-72-B</b>	Black	2 Power	230
<b>BURELE-1P1U-72-B</b>	Black	1 Power / 1 USB Duplex	245
<b>BURELE-2P-72-W</b>	White	2 Power	230
<b>BURELE-1P1U-72-W</b>	White	1 Power / 1 USB Duplex	245

POWER & DATA

EZ POWER

The EZ Power can easily integrate into existing worksurfaces with a simple clamp-on attachment. For example, a convenient tablet or phone holder is built into a clamp mount to keep your desk organized. In addition, 3-power outlets and 1-USB duplex provide the flexibility to maintain all devices well charged.

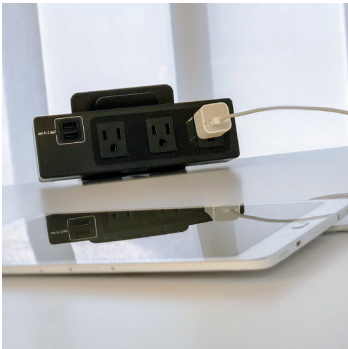


DESCRIPTION

- 3 AC 15 Amp receptacle and 3.1 Amp combined USB duplex
- 96" plug power cord
- Surge protection up to 510 Joules
- Colors: Black or White
- Removable above the surface mount
- QuickShip

OPTIONS

- 3 Power / 1 USB Duplex



EZ POWER PRICING

PART #	COLOR	CONFIGURATION	LIST PRICE
EZPOWER-3P1U-B	Black	3 Power / 1 USB Duplex	260
EZPOWER-3P1U-W	White	3 Power / 1 USB Duplex	260

## WIRE MANAGEMENT

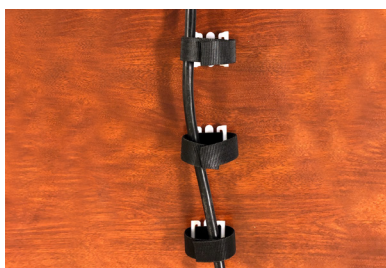
## HORIZONTAL WIRE MANAGEMENT



## ■ LOOP CLIPS

Package of 4 wire management clips with screws.

PART #	LIST PRICE
<b>WM-LOOPCLIP</b>	6



## ■ VELCRO LOOP

Package of 4 Velcro hook & loop wire management clips.

PART #	LIST PRICE
<b>WM-VELCRO</b>	15



## ■ CABLE GRIP

Grip wire manager that holds 5 cords.

PART #	LIST PRICE
<b>WM-CABLE-GRIP</b>	18



## ■ J-SHAPE WIRE CHANNEL

J-shape wire management channel with double-sided adhesive tape to be fastened under a desk/work surface to keep cables up and out of the way. Available in 4, 5, and 6-foot lengths. 4-5/16" overall flange, 1-3/32" deep, with a serrated finish. The trough is 2-9/16" high. The stock color is Black.

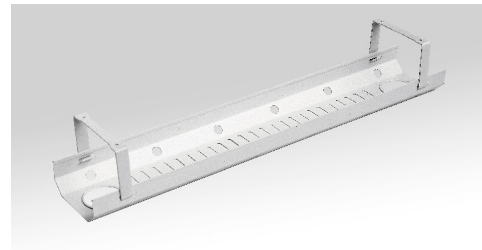
PART #	LIST PRICE
<b>JWM-4</b>	52
<b>JWM-5</b>	65
<b>JWM-6</b>	77



## ■ LOCKING WIRE CHANNEL

Black 32" plastic latching wire manager.

PART #	LIST PRICE
<b>WM-SNAP-CHANNEL</b>	20



## ■ WIRE TROUGH

27.6" metal wire trough management unit, available in black and silver.

PART #	COLOR	LIST PRICE
<b>WM-TROUGH-B</b>	Black	37
<b>WM-TROUGH-MS</b>	Metallic Silver	37

## ■ WIRE TRAY

20" wire management tray available in black or silver.



PART #	COLOR	LIST PRICE
<b>WM-TRAY-20-B</b>	Black	29
<b>WM-TRAY-20-MS</b>	Metallic Silver	29

## WIRE MANAGEMENT

## VERTICAL WIRE MANAGEMENT



## ■ LEG CLIP

2" wide leg clip wire manager available in black and silver.

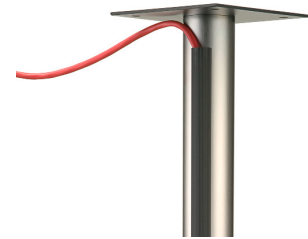
PART #	COLOR	LIST PRICE
<b>WM-LEGCLIP2-B</b>	Black	18
<b>WM-LEGCLIP2-MS</b>	Metallic Silver	18



## ■ MAGNETIC CHANNEL

2" wide magnetic wire manager available in black and silver.

PART #	COLOR	LIST PRICE
<b>WM-MAG-CHANNEL-B</b>	Black	104
<b>WM-MAG-CHANNEL-MS</b>	Metallic Silver	104



## ■ 1" WIRE CHANNEL

Adhesive vertical table leg wire manager, 24" long, available in black and gray

PART #	COLOR	LIST PRICE
<b>WM-24-B</b>	Black	66
<b>WM-24-GR</b>	Gray	66



## ■ ADJUSTABLE SPINE

51" spine wire management conceals and carries wires from under the desk to the floor.

It screws under the desk and comes with a weighted base.

PART #	LIST PRICE
<b>WM-SPINE-TR</b>	243



## ■ METAL SNAP-ON

Features an easy snap-on installation that allows for repositioning. Two options for 2" and 3" columns with a capacity for multiple power and data cables. 17-3/4" length; available in Black (-BL) and Metallic Silver (-MS) finish.

PART #	LIST PRICE
<b>SNAP-WM</b> for 2" column	86
<b>SNAP-WM3</b> for 3" column	86

TABLE CONNECTORS & TOP SUPPORT

TABLE CONNECTORS



■ QUICK ALIGN TABLE

Connect two or more tables and add flexibility to any space. 6-1/4" x 2-1/2" steel plate, 2 plastic knobs.

PART #	LIST PRICE
QA	80

TOP SUPPORT



■ STEEL TOP SUPPORT

10 gauge channel, includes screws. Available in 42" or 54" lengths.

PART #	LIST PRICE
STS-42	77
STS-54	87

## BEST VALUE - TOPS

Best Value tops feature a durable thermo-fused material for office and restaurant use with several color options and edges. In addition, all tops 60" or longer include a steel top support to prevent the top from sagging.

### ■ FEATURES

**STRUCTURE:** 1" thick top; 45" density particle board core

**LAMINATE:** 4 low pressure laminate colors with matching PVC edge

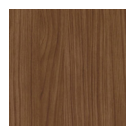
**PACKAGING:** Tops are packaged individually



### ■ ONE DAY QUICK SHIP TABLETOPS COLOR OPTIONS



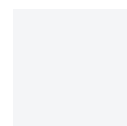
GRAY  
DRIFTWOOD  
(DR)



WALNUT  
(WA)



GRAY  
(G)



WHITE  
(W)

### ■ BEST VALUE TOPS WITH MATCHING EDGES PRICING\*\*

TABLE SHAPE	PART #	SIZE	NET WEIGHT	LIST PRICE
RECTANGLE	<b>BV-1860</b>	18" x 60"	38 lbs	452
	<b>BV-1872</b>	18" x 72"	45 lbs	512
	<b>BV-2448</b>	24" x 48"	40 lbs	426
	<b>BV-2460</b>	24" x 60"	50 lbs	467
	<b>BV-2472</b>	24" x 72"	60 lbs	549
	<b>BV-3060</b>	30" x 60"	63 lbs	549
	<b>BV-3072</b>	30" x 72"	75 lbs	604
SQUARE	<b>BV-3636</b>	36" x 36"	45 lbs	474
	<b>BV-4242</b>	42" x 42"	62 lbs	563
ROUND	<b>BV-36R</b>	36"	45 lbs	510
	<b>BV-42R</b>	42"	62 lbs	593

\*\*Specify code for color

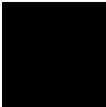


METAL FINISH COLORS

QUICK SHIP STOCK COLORS

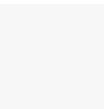


METALLIC  
SILVER

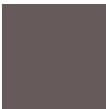


BLACK

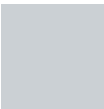
POWDER COAT COLORS



GLOSSY  
WHITE



MEDIUM  
TONE



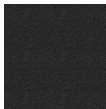
HW  
PLATINUM



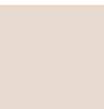
SMOKE



GRAPHITE



BLACK  
WRINKLE



IVORY



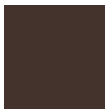
PISTACHIO



EVERGREEN



POWDER  
BLUE



AUBURN



NATURAL



METALLIC  
GOLD

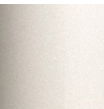


COOL  
GRAY



RUBY

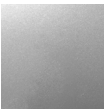
METALLIC POWDER COAT COLORS



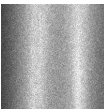
METALLIC  
SAND



GUN METAL



METALLIC  
PLATINUM

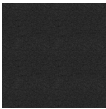


STEEL  
SILVER

NON-POWDER COAT COLORS



STAINLESS  
STEEL\*



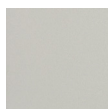
BLACK  
WRINKLE

NON-STOCK FINISHES LEAD TIME: 10 - 15 BUSINESS DAYS.  
Metal finishes vary by base style | Additional charges may apply  
Images are representative of the material and may not be an exact match

\* Only available for Cast Iron-2 Series \*\* Not available in powder coat finishes

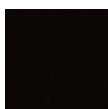
# PATRIOT METAL FINISH COLOR OPTIONS

## PATRIOT QUICK SHIP STOCK COLOR

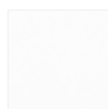


**METALLIC  
SILVER**  
[MS]  
METALLIC  
SEMI-  
GLOSS

## PATRIOT METAL COLORS



**BLACK**  
[B07]  
MATTE



**DESIGNER  
WHITE**  
[405]  
MATTE



**SOFT  
WHITE**  
[LU]  
MATTE



**WHITE**  
[91]  
MATTE



**ANODIZED  
SILVER** | S09



**STARLIGHT  
SILVER**  
[S15]  
METALLIC  
SEMI-  
GLOSS



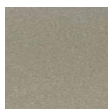
**WARM  
NEUTRAL  
GRAY**  
[WN]  
MATTE



**TAUPE  
METALLIC**  
[504]  
METALLIC  
SEMI-  
GLOSS



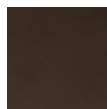
**MEDIUM  
TONE**  
[MT]  
MATTE



**METALLIC  
BRONZE**  
[EH]  
METALLIC  
SEMI-  
GLOSS



**CLEAR**  
[CC05]  
MATTE



**SATIN  
BRONZE**  
[SB]  
MATTE



**ANTHRA-  
CITE GRAY**  
[7016]  
GLOSS



**GRAPHITE**  
[G2]  
MATTE



**CARBON  
METALLIC**  
[514]  
METALLIC  
SEMI-  
GLOSS



**BUMPER  
BLACK**  
[B05]  
GLOSS



**COPPER  
TOP**  
[1023]  
SEMI-  
GLOSS



**ORANGE**  
[OR01]  
GLOSS



**RED**  
[R02]  
GLOSS



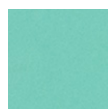
**MOSS  
GREEN**  
[G01]  
GLOSS



**SIGNAL  
GREEN**  
[6032]  
GLOSS



**SERPO  
GREEN**  
[G03]  
GLOSS



**LIGHT  
GREEN**  
[6027]  
GLOSS



**SKY  
BLUE**  
[TR1J]  
MATTE

NON-STOCK FINISHES LEAD TIME: 10 - 15 BUSINESS DAYS.

Metal finishes for Patriot style bases

Images are representative of the material and may not be an exact match



## IMPORTANT INFORMATION

## CONVENIENT PAYMENT OPTIONS

Faxed check, Visa, MasterCard, American Express, and Discover

Special-T is an ISO 9000/9001 certified manufacturer; our products meet or exceed all relevant ANSI/BIFMA standards. We are committed to the highest degree of quality and craftsmanship. Our Quality Management System is designed to guarantee the highest price-quality ratio.

## TERMS

Upon credit approval, terms are net 30-days from the date of invoice. Before approved credit, payment must be received before shipping. We accept Visa, Master Card, Discover, and American Express. When you provide a faxed or mailed check, you authorize us to use information from your check to make one-time electronic funds transfer from your account or process this transaction as a check. All custom orders require a 50% deposit. COD payment method is not accepted.

## LEAD-TIMES

Lead-time for all products in the stocked finish is 24 hours after the order is confirmed. Non-stocked finishes, lead-time is 10-15 business days. Please contact the Special-T Customer Service Department at (888) 705-0777 to check availability. Can expedite specific orders for an additional 10% Expedited Order Fee.

## ACKNOWLEDGMENT OF ORDERS

All orders are entered, manufactured, and shipped according to the acknowledgment. Notify Special-T immediately of any discrepancy.

## PRICES

All prices are subject to change without notice.

## CANCELLATION POLICY

Custom orders are not subject to cancellation.

## SHIPMENT INFORMATION

Orders will ship via UPS or a common LTL carrier, whichever is the least expensive. Orders may ship collect on a designated alternative LTL carrier. Special and international shipping arrangements will be made as necessary and noted on the original Purchase Order. All orders are shipped FOB our warehouse. We do not ship COD. The buyer accepts legal responsibility for the merchandise when shipped. Upon receipt, please inspect the shipment thoroughly for visible and possible concealed damage. If a package is lost or damage is discovered, the responsible receiving party should note this with the carrier and file a claim immediately.



## WARRANTY & RETURN

### WARRANTY

May 15, 2020

*To expedite your warranty claims quickly and accurately, go to [specialt.net/claims](https://specialt.net/claims) and fill out the Warranty/Freight claim form. All claims must reference the original Purchase Order number and Special-T Sales Order or Invoice number.*

**Patriot Electric and Liberty Electric Height Adjustable Tables and Bases** are warranted to the original purchaser for 10 years from the date of delivery, under normal use for one 8-hour shift per day against manufacturing defects. We will repair or replace, at our discretion, any products that we determine to be defective as a result of faulty workmanship. In no event shall our liability under this warranty exceed the original purchase price of the product determined to be defective. This warranty does not apply where the product has been abused, mishandled, or subjected to use other than that for which it was designed. For purposes of this warranty, normal wear to the product finish shall not be considered a defect.

**Table Bases Only.** Bases are warranted to the original purchaser for 10 years from the date of delivery, under normal use, against manufacturing defects. We will repair or replace, at our discretion, any products that we determine to be defective as a result of faulty workmanship. In no event shall liability under this warranty exceed the original purchase price of the product determined to be defective. This warranty does not apply where the product has been abused, mishandled, or subjected to use other than that for which it was designed, including excessive weight and top size limitations. This warranty does not apply to normal wear and tear or damage caused by accident, neglect, misuse, or improper installation or operation. There are no other warranties expressed or implied.

**Tabletops Only.** Tabletops purchased separately are warranted for one (1) year from the original invoice date against poor workmanship and manufacturing defects. We retain the right to replace or repair at our discretion any products or parts thereof which are found defective in materials or workmanship. This warranty becomes invalid for products engineered by the client, whereas the construction method and material specifications of final product assembly adversely affect materials and workmanship. In no event, shall liability under this warranty exceed the original purchase price. This warranty becomes invalid if the product or parts exhibits abuse or improper or unusual use. This warranty is invalid if the product is subject to caustic or abrasive cleaning agents or sharp objects that cause damage. This warranty is invalid if the product is altered from its original condition or the client performs additional processing on the product that results in any alteration from its original condition. This warranty does not cover self-edge tops and/or tops where table legs/bases are more than 60" apart and do not include steel top support. Our tables and tabletops are not for outdoor use. Any damage related to outdoor use is not covered under this warranty. This warranty does not apply to normal wear and tear or damage caused by accident, neglect, misuse, or improper installation or operation. This warranty is expressly made in lieu of any and all other warranties expressed or implied.

Customer Service:



888.705.0777



[customerservice@specialt.net](mailto:customerservice@specialt.net)

#### CONTACT INFORMATION

Warranty:



888.705.0777



[warranty@specialt.net](mailto:warranty@specialt.net)



## WARRANTY & RETURN

### WARRANTY

May 15, 2020

### CONTACT INFORMATION

Customer Service:



888.705.0777



customerservice@specialt.net

Warranty:



888.705.0777



warranty@specialt.net

**Power & Data:** All Power and Data components are warranted for 1 year from the date of the original invoice against poor workmanship and manufacturing defects. This warranty becomes invalid for products engineered by the client, whereas the construction method, material specifications of final product assembly adversely affect materials and or workmanship. In no event, shall liability under this warranty exceed the original purchase price. This warranty does not apply to normal wear and tear or damage caused by accident, neglect, misuse, or improper installation or operation.

**Monitor Arms** are warranted to the original purchaser for 10 years from the delivery date, under normal use for one, 8-hour shift per day, against manufacturing defects. We will repair or replace, at our discretion, any products that we determine to be defective as a result of faulty workmanship. In no event shall our liability under this warranty exceed the original purchase price of the product determined to be defective. This warranty does not apply where the product has been abused, mishandled, or subjected to use other than that for which it was designed. This warranty does not apply to normal wear and tear or damage caused by accident, neglect, misuse, or improper installation or operation.

**Chairs:** Special-T warrants to the original purchaser of the product and from the original date of sale the following: Lifetime Warranty to the original end-user; the company will repair or replace, at its option, factory defective structural and mechanical parts with a comparable product without charge. This warranty is for a single shift, standard commercial usage, defined as a standard 8-hour workday, five days a week. Weight limitation varies by product. Upholstery fabric and foam are warranted against wear through and deterioration during normal usage for five (5) years. COM and COL are not warranted.

**Wellness and Privacy Screens:** Clear Plexiglas, Frosted Acrylic, and PET Wellness and Privacy Screens are warranted for 10 years from the date of delivery against defects in materials or workmanship, subject to the limitations exclusions and other provisions detailed below. This limited warranty only applies to the original purchaser. The limited warranty is terminated upon transfer, sale, or modification of the product. In no event, shall liability under this warranty exceed the original purchase price. This warranty does not apply to normal wear and tear or damage caused by accident, neglect, abuse, misuse, vandalism, disaster, improper storage, improper cleaning, chemical damage, improper installation, operation, environmental factors, or discoloration due to sunlight or indoor lighting. This warranty does not apply to changes in surface finish due to aging or prolonged exposure to fluids or sun. In the event of repair and/or replacement of any defective product, Special-T does not warrant matching color, texture, or dye lots except within commercially reasonable standards. This warranty is expressly made in lieu of any and all other warranties expressed or implied.

**Labor Warranty** is subject to written approval. It does not cover labor costs associated with concealed freight damage.



## WARRANTY & RETURN

### RETURN POLICY

Customer Service:



888.705.0777



customerservice@specialt.net

### CONTACT INFORMATION

Warranty:



888.705.0777



warranty@specialt.net

The Return of any merchandise to the Special-T, LLC, warehouse must be authorized prior to shipment.

- All returns must be accompanied by a Return Merchandise Authorization Form (RMA). The RMA must be requested within thirty (30) days of the original invoice date. Please contact Customer Service at 888.705.0777, Monday to Friday, 8:00 AM to 5:00 PM EST. Upon approval of the return, send the prepaid shipment to 11820 Wills Road, Suite 140, Alpharetta, GA 30009-0256.
- Tops - 30% restocking fee will apply if received in new condition
- Bases - 25% restocking fee will apply if received in new condition
- Products must be in new condition and in their original carton
- The following items are non-returnable and non-refundable:
  - Custom table tops
  - Power and data units
  - Closeout tables and bases
  - Custom metal paint and Black Wrinkle finish
  - Metal bases with irreversible alterations



TABLES, BASES & ACCESSORIES



11820 Wills Rd, Suite 140,  
Alpharetta, GA 30009  
888.705.0777  
[www.SpecialT.net](http://www.SpecialT.net)